

THE COVE

DUBAI CREEK HARBOUR

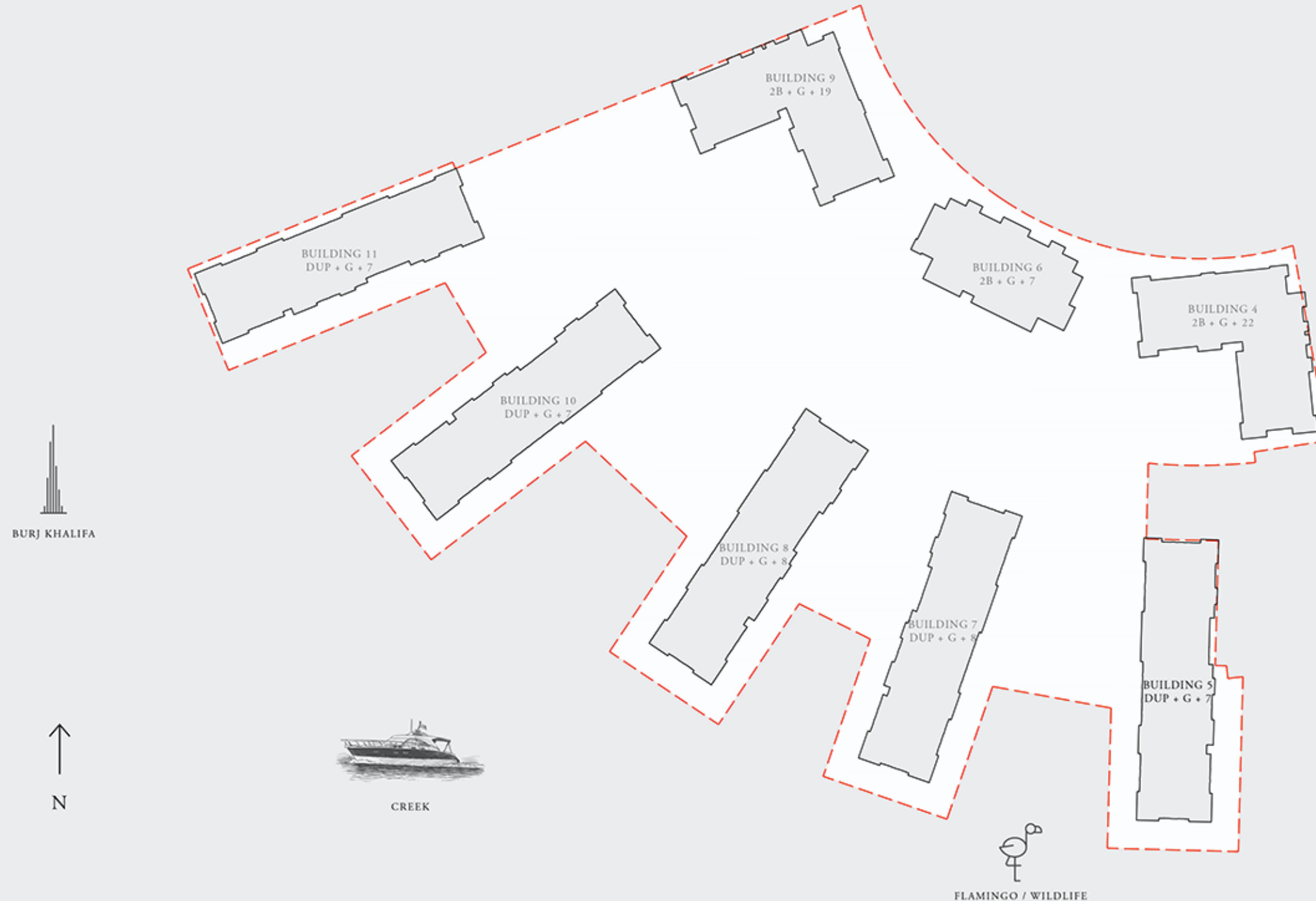
FLOOR PLANS
BUILDING 5

AS
REAL ESTATE
STAY AHEAD, INVEST SMART

db
DUBRICKS
POSSIBILITIES ARE LIMITLESS

PROPERTY / CLUSTER NAME

MASSING PLAN



FLOOR PLAN 1. All dimensions are in imperial and metric, and measured from finish to finish excluding construction tolerances. 2. All materials, dimensions, and drawings are approximate only. 3. Information is subject to change without notice, at developer's absolute discretion. 4. Actual area may vary from the stated area. 5. Drawings not to scale. 6. All images used are for illustrative purposes only and do not represent the actual size, features, specifications, fittings, and furnishings. 7. The developer reserves the right to make revisions / alterations, at it's absolute discretion, without any liability whatsoever.

THE COVE

DUBAI CREEK HARBOUR

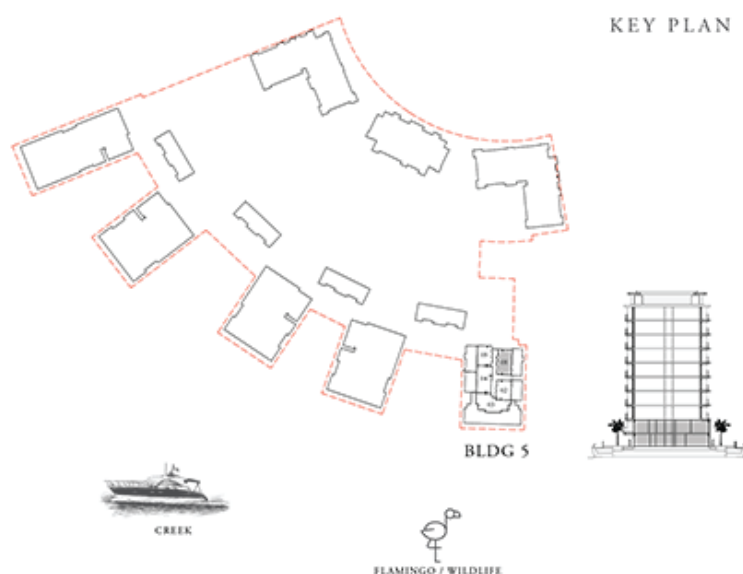
BUILDING 5 4 BEDROOM DUPLEX

LEVELS B2 & B1

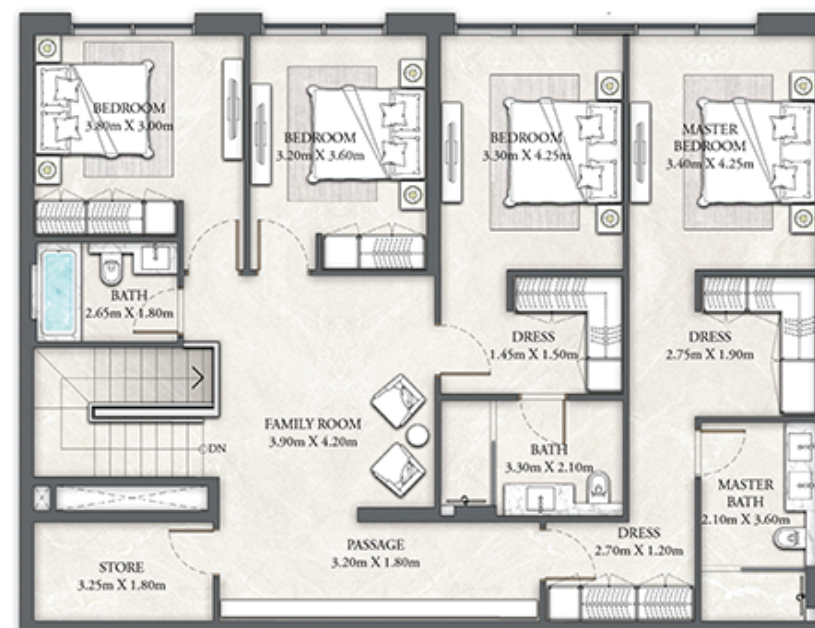
UNIT 01

| | | |
|--------------|----------------|--------------|
| SUITE AREA | 2981.60 SQ.FT. | 277.00 SQ.M. |
| BALCONY AREA | 902.02 SQ.FT. | 83.80 SQ.M. |
| TOTAL AREA | 3883.62 SQ.FT. | 360.80 SQ.M. |

KEY PLAN



UPPER LEVEL



LOWER LEVEL



FLOOR PLAN 1. All dimensions are in imperial and metric, and measured from finish to finish excluding construction tolerances. 2. All materials, dimensions, and drawings are approximate only. 3. Information is subject to change without notice, at developer's absolute discretion. 4. Actual area may vary from the stated area. 5. Drawings not to scale. 6. All images used are for illustrative purposes only and do not represent the actual size, features, specifications, fittings, and furnishings. 7. The developer reserves the right to make revisions / alterations, at it's absolute discretion, without any liability whatsoever.

EMAAR

THE COVE

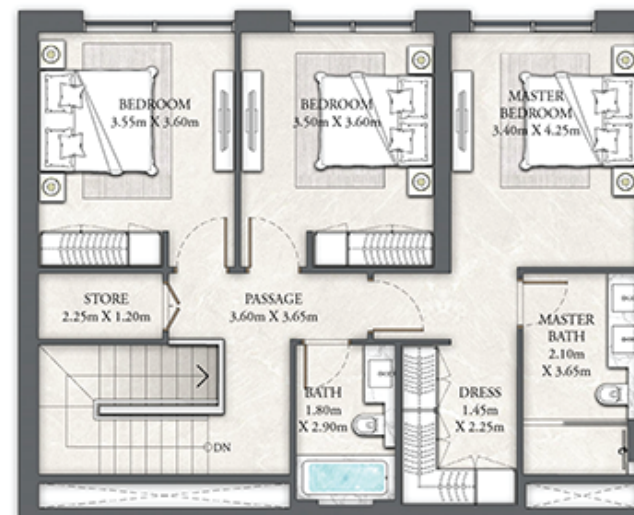
DUBAI CREEK HARBOUR

BUILDING 5 3 BEDROOM DUPLEX

LEVELS B2 & B1

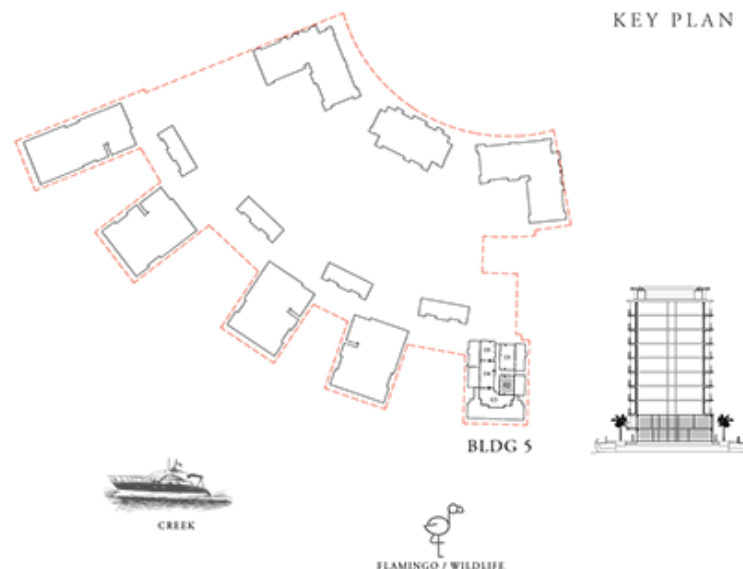
UNIT 02

UPPER LEVEL

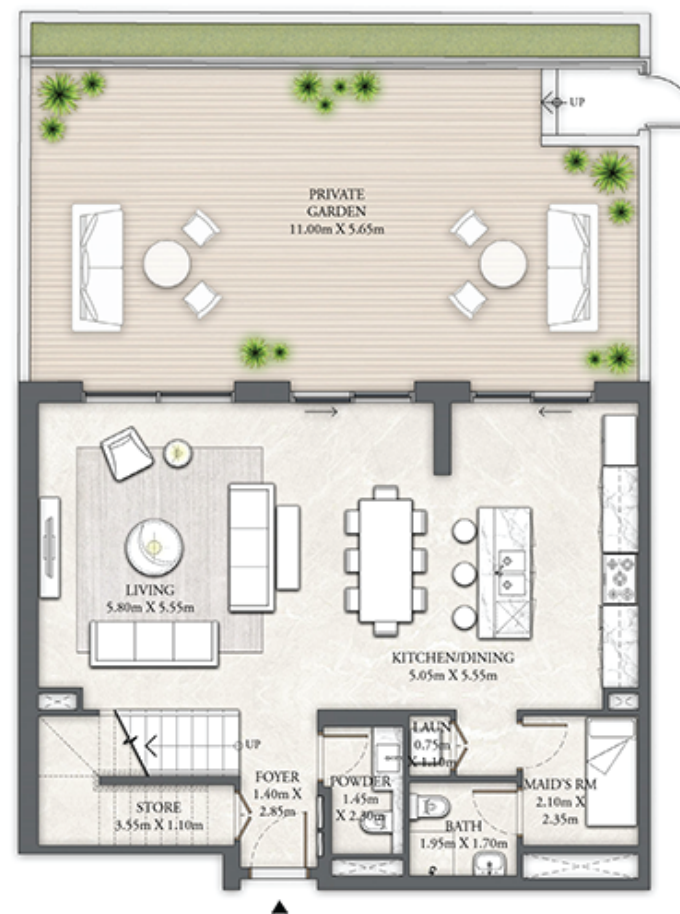


| | | |
|--------------|----------------|--------------|
| SUITE AREA | 2005.85 SQ.FT. | 186.35 SQ.M. |
| BALCONY AREA | 733.24 SQ.FT. | 68.12 SQ.M. |
| TOTAL AREA | 2739.09 SQ.FT. | 254.47 SQ.M. |

KEY PLAN



LOWER LEVEL



FLOOR PLAN 1. All dimensions are in imperial and metric, and measured from finish to finish excluding construction tolerances. 2. All materials, dimensions, and drawings are approximate only. 3. Information is subject to change without notice, at developer's absolute discretion. 4. Actual area may vary from the stated area. 5. Drawings not to scale. 6. All images used are for illustrative purposes only and do not represent the actual size, features, specifications, fittings, and furnishings. 7. The developer reserves the right to make revisions / alterations, at it's absolute discretion, without any liability whatsoever.

EMAAR

THE COVE

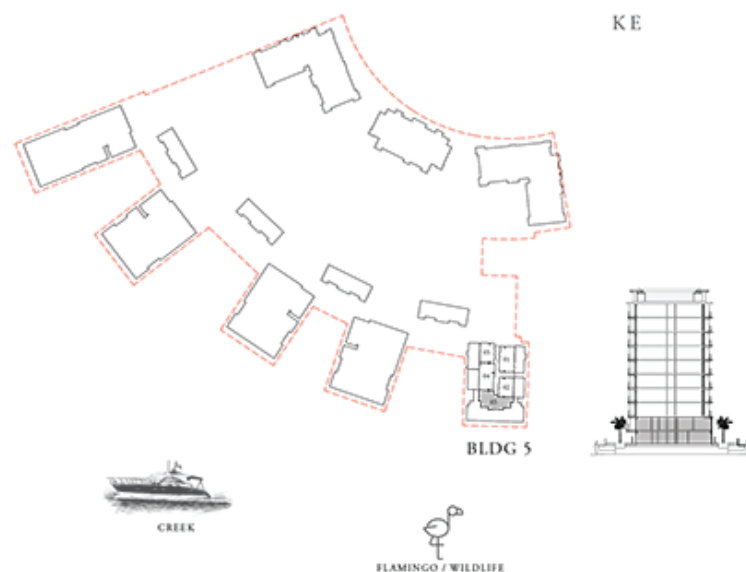
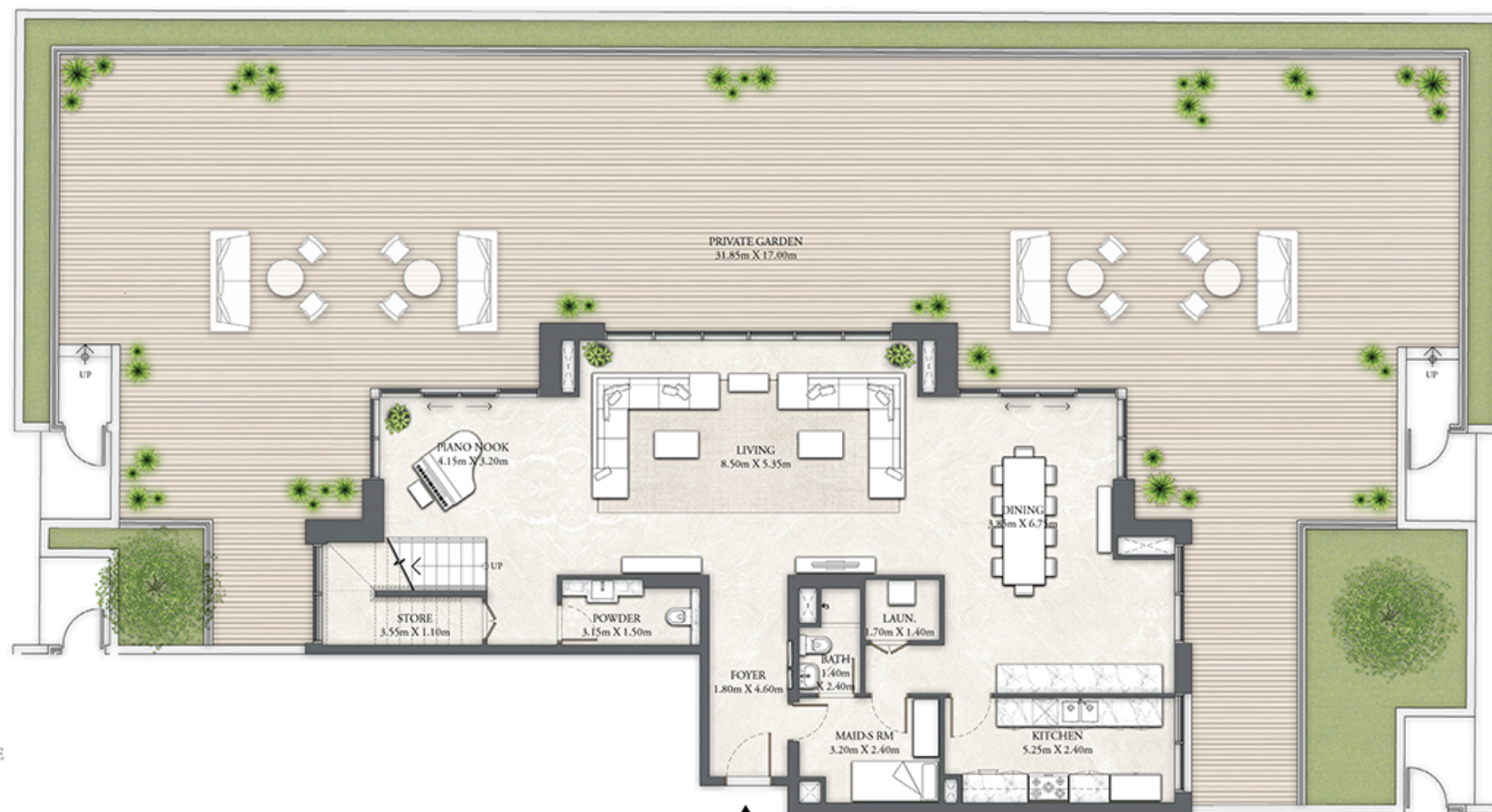
DUBAI CREEK HARBOUR

BUILDING 5 4 BEDROOM DUPLEX

LEVEL B2

UNIT 03

| | | |
|--------------|----------------|--------------|
| SUITE AREA | 1650.00 SQ.FT. | 153.29 SQ.M. |
| BALCONY AREA | 3244.78 SQ.FT. | 301.45 SQ.M. |
| TOTAL AREA | 4894.78 SQ.FT. | 454.74 SQ.M. |



LOWER LEVEL

FLOOR PLAN 1. All dimensions are in imperial and metric, and measured from finish to finish excluding construction tolerances. 2. All materials, dimensions, and drawings are approximate only. 3. Information is subject to change without notice, at developer's absolute discretion. 4. Actual area may vary from the stated area. 5. Drawings not to scale. 6. All images used are for illustrative purposes only and do not represent the actual size, features, specifications, fittings, and furnishings. 7. The developer reserves the right to make revisions / alterations, at it's absolute discretion, without any liability whatsoever.

EMAAR

THE COVE

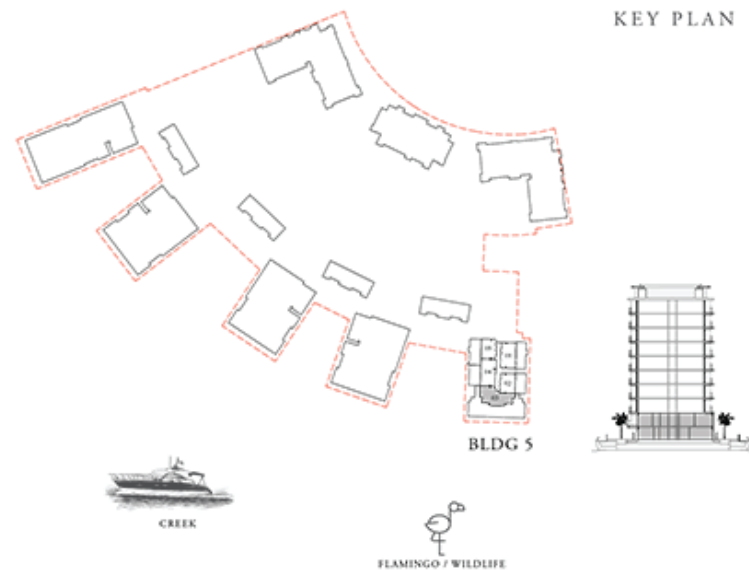
DUBAI CREEK HARBOUR

BUILDING 5 4 BEDROOM DUPLEX

LEVEL B1

UNIT 03

| | | |
|----------------|----------------|--------------|
| SUITE AREA | 1789.07 SQ.FT. | 166.21 SQ.M. |
| BALCONY AREA | 243.48 SQ.FT. | 22.62 SQ.M. |
| TOTAL AREA | 2032.55 SQ.FT. | 188.83 SQ.M. |
| TOTAL (B1+ B2) | 6927.33 SQ.FT. | 643.57 SQ.M. |



FLOOR PLAN 1. All dimensions are in imperial and metric, and measured from finish to finish excluding construction tolerances. 2. All materials, dimensions, and drawings are approximate only. 3. Information is subject to change without notice, at developer's absolute discretion. 4. Actual area may vary from the stated area. 5. Drawings not to scale. 6. All images used are for illustrative purposes only and do not represent the actual size, features, specifications, fittings, and furnishings. 7. The developer reserves the right to make revisions / alterations, at it's absolute discretion, without any liability whatsoever.

EMAAR

THE COVE

DUBAI CREEK HARBOUR

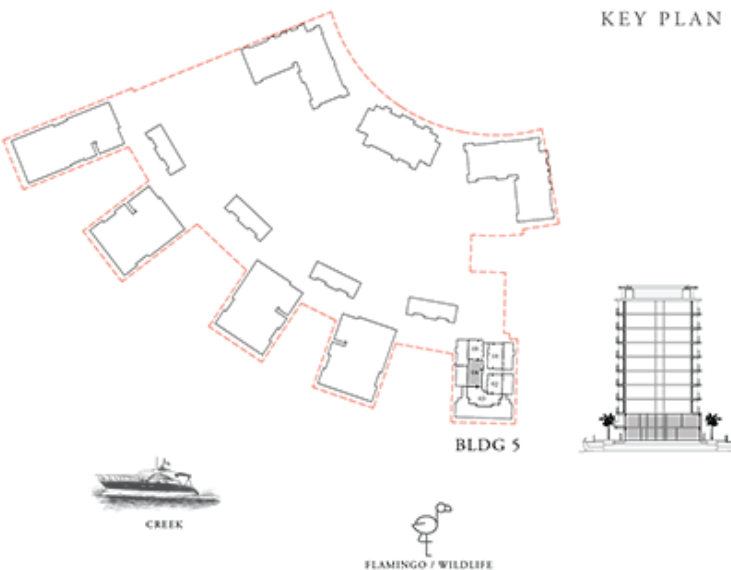
BUILDING 5 4 BEDROOM DUPLEX

LEVELS B2 & B1

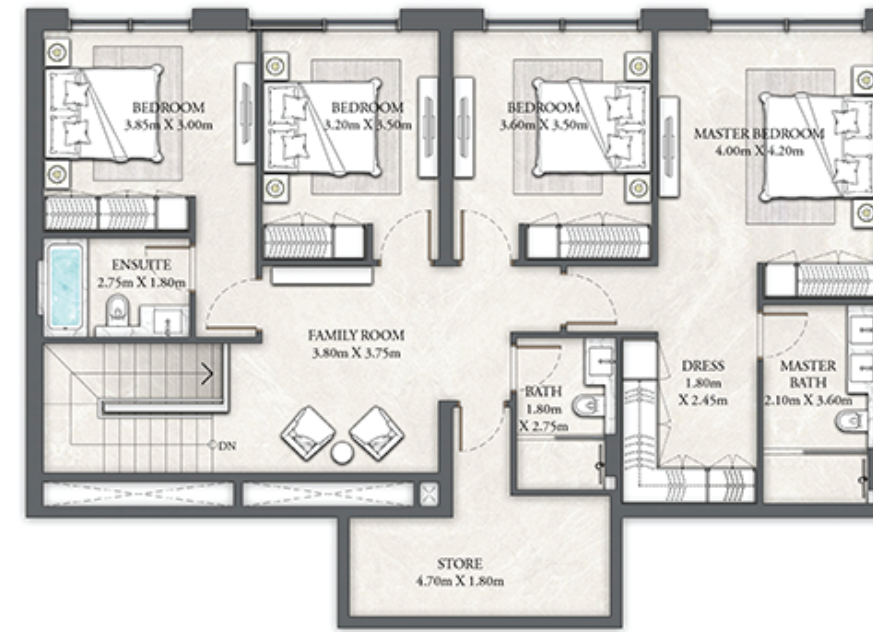
UNIT 04

| | | |
|--------------|----------------|--------------|
| SUITE AREA | 2908.08 SQ.FT. | 270.17 SQ.M. |
| BALCONY AREA | 1058.63 SQ.FT. | 98.35 SQ.M. |
| TOTAL AREA | 3966.71 SQ.FT. | 368.52 SQ.M. |

KEY PLAN



UPPER LEVEL



LOWER LEVEL



FLOOR PLAN 1. All dimensions are in imperial and metric, and measured from finish to finish excluding construction tolerances. 2. All materials, dimensions, and drawings are approximate only. 3. Information is subject to change without notice, at developer's absolute discretion. 4. Actual area may vary from the stated area. 5. Drawings not to scale. 6. All images used are for illustrative purposes only and do not represent the actual size, features, specifications, fittings, and furnishings. 7. The developer reserves the right to make revisions / alterations, at it's absolute discretion, without any liability whatsoever.

EMAAR

THE COVE

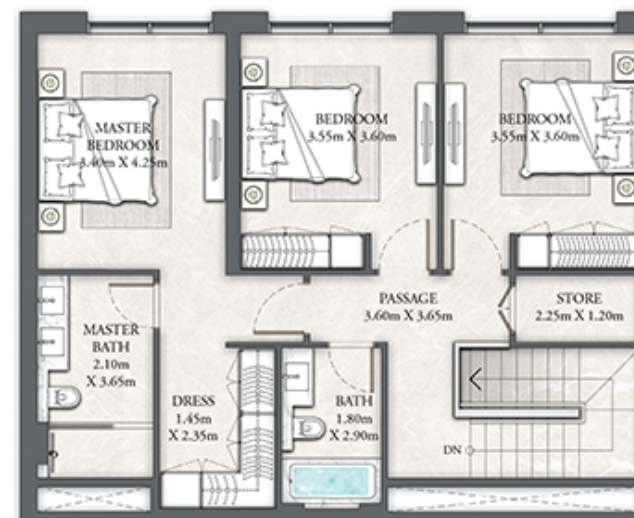
DUBAI CREEK HARBOUR

BUILDING 5 3 BEDROOM DUPLEX

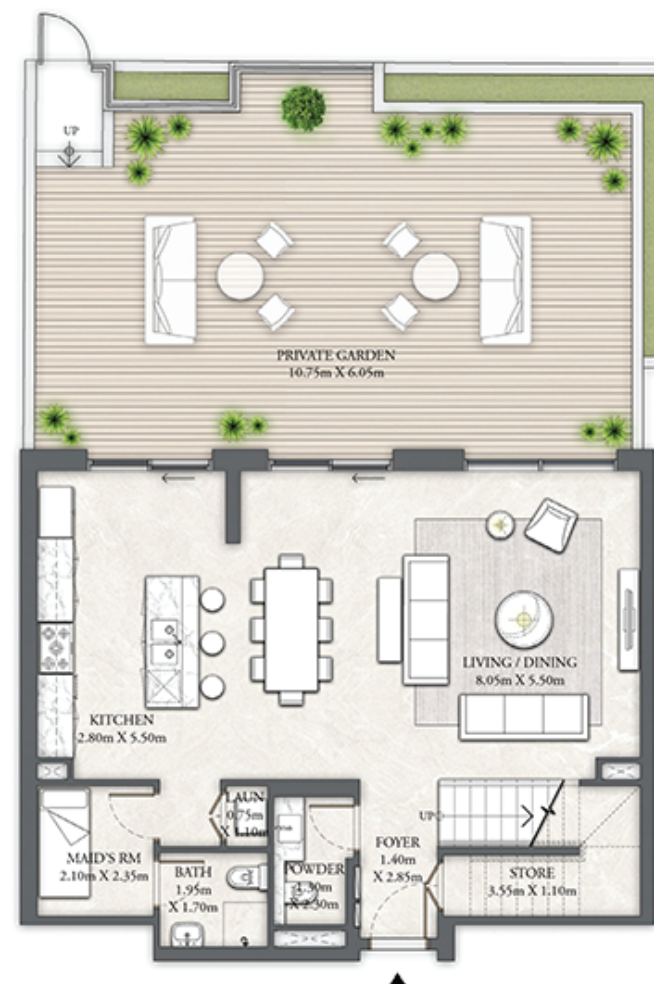
LEVELS B2 & B1

UNIT 05

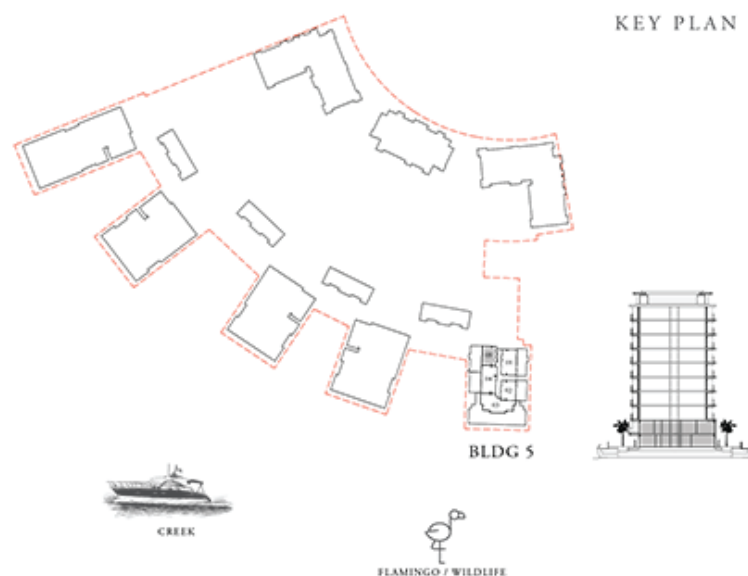
UPPER LEVEL



LOWER LEVEL



KEY PLAN



FLOOR PLAN 1. All dimensions are in imperial and metric, and measured from finish to finish excluding construction tolerances. 2. All materials, dimensions, and drawings are approximate only. 3. Information is subject to change without notice, at developer's absolute discretion. 4. Actual area may vary from the stated area. 5. Drawings not to scale. 6. All images used are for illustrative purposes only and do not represent the actual size, features, specifications, fittings, and furnishings. 7. The developer reserves the right to make revisions / alterations, at it's absolute discretion, without any liability whatsoever.

EMAAR

THE COVE

DUBAI CREEK HARBOUR

BUILDING 5 1 BEDROOM

LEVEL G

UNIT 01

| | | |
|--------------|---------------|-------------|
| SUITE AREA | 695.89 SQ.FT. | 64.65 SQ.M. |
| BALCONY AREA | 91.60 SQ.FT. | 8.51 SQ.M. |
| TOTAL AREA | 787.49 SQ.FT. | 73.16 SQ.M. |



KEY PLAN



FLOOR PLAN 1. All dimensions are in imperial and metric, and measured from finish to finish excluding construction tolerances. 2. All materials, dimensions, and drawings are approximate only. 3. Information is subject to change without notice, at developer's absolute discretion. 4. Actual area may vary from the stated area. 5. Drawings not to scale. 6. All images used are for illustrative purposes only and do not represent the actual size, features, specifications, fittings, and furnishings. 7. The developer reserves the right to make revisions / alterations, at it's absolute discretion, without any liability whatsoever.

EMAAR

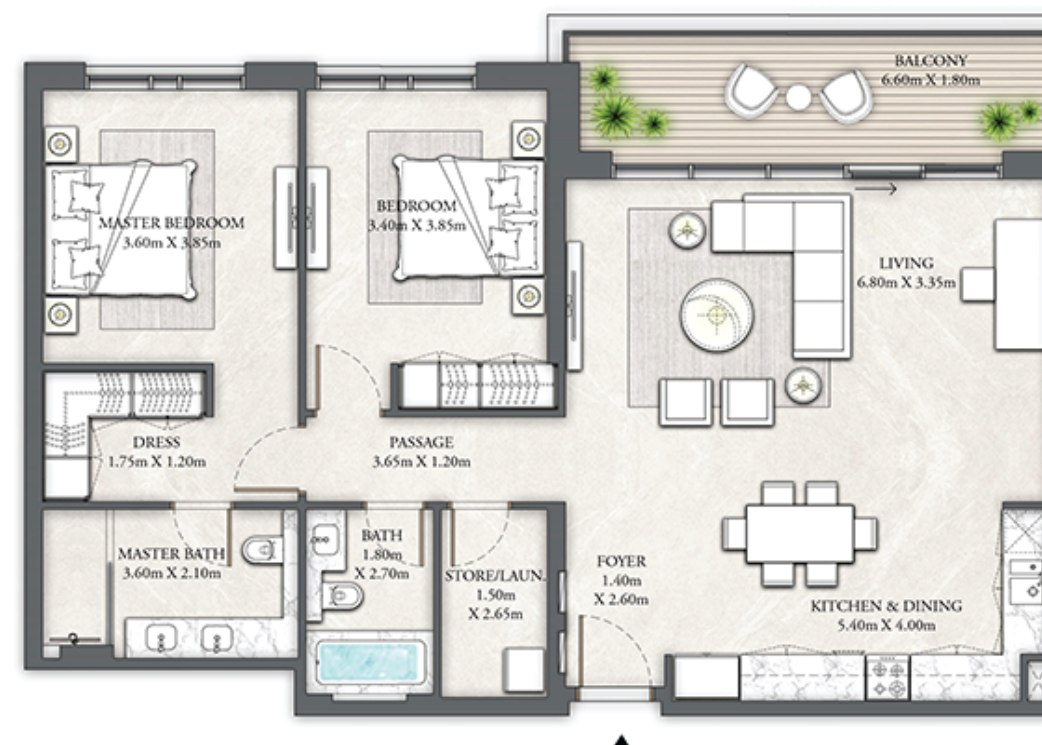
THE COVE

DUBAI CREEK HARBOUR

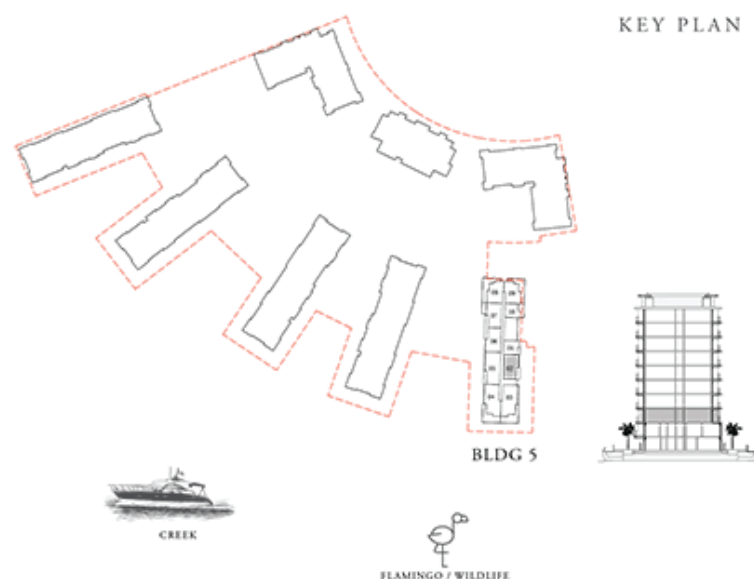
BUILDING 5 2 BEDROOM

LEVEL G UNIT 02

| | | |
|--------------|----------------|--------------|
| SUITE AREA | 1247.86 SQ.FT. | 115.93 SQ.M. |
| BALCONY AREA | 143.05 SQ.FT. | 13.29 SQ.M. |
| TOTAL AREA | 1390.91 SQ.FT. | 129.22 SQ.M. |



KEY PLAN



FLOOR PLAN 1. All dimensions are in imperial and metric, and measured from finish to finish excluding construction tolerances. 2. All materials, dimensions, and drawings are approximate only. 3. Information is subject to change without notice, at developer's absolute discretion. 4. Actual area may vary from the stated area. 5. Drawings not to scale. 6. All images used are for illustrative purposes only and do not represent the actual size, features, specifications, fittings, and furnishings. 7. The developer reserves the right to make revisions / alterations, at it's absolute discretion, without any liability whatsoever.

EMAAR

THE COVE

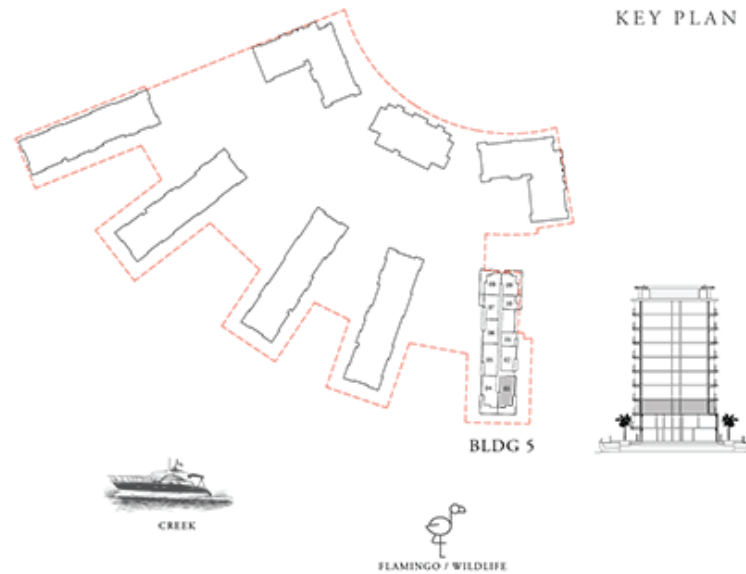
DUBAI CREEK HARBOUR

BUILDING 5 3 BEDROOM

LEVEL G

UNIT 03

| | | |
|--------------|----------------|--------------|
| SUITE AREA | 1621.26 SQ.FT. | 150.62 SQ.M. |
| BALCONY AREA | 249.40 SQ.FT. | 23.17 SQ.M. |
| TOTAL AREA | 1870.66 SQ.FT. | 173.79 SQ.M. |



FLOOR PLAN 1. All dimensions are in imperial and metric, and measured from finish to finish excluding construction tolerances. 2. All materials, dimensions, and drawings are approximate only. 3. Information is subject to change without notice, at developer's absolute discretion. 4. Actual area may vary from the stated area. 5. Drawings not to scale. 6. All images used are for illustrative purposes only and do not represent the actual size, features, specifications, fittings, and furnishings. 7. The developer reserves the right to make revisions / alterations, at it's absolute discretion, without any liability whatsoever.

EMAAR

THE COVE

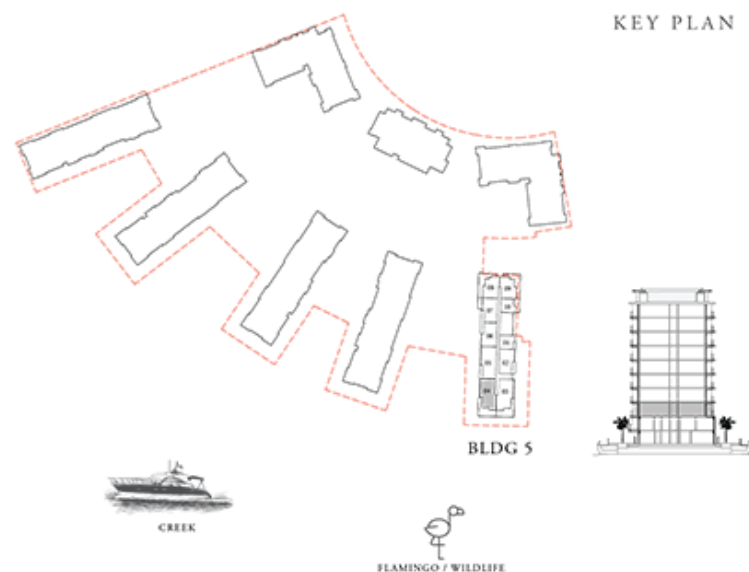
DUBAI CREEK HARBOUR

BUILDING 5 3 BEDROOM

LEVEL G

UNIT 04

| | | |
|--------------|----------------|--------------|
| SUITE AREA | 1618.35 SQ.FT. | 150.35 SQ.M. |
| BALCONY AREA | 249.29 SQ.FT. | 23.16 SQ.M. |
| TOTAL AREA | 1867.64 SQ.FT. | 173.51 SQ.M. |



KEY PLAN



FLOOR PLAN 1. All dimensions are in imperial and metric, and measured from finish to finish excluding construction tolerances. 2. All materials, dimensions, and drawings are approximate only. 3. Information is subject to change without notice, at developer's absolute discretion. 4. Actual area may vary from the stated area. 5. Drawings not to scale. 6. All images used are for illustrative purposes only and do not represent the actual size, features, specifications, fittings, and furnishings. 7. The developer reserves the right to make revisions / alterations, at it's absolute discretion, without any liability whatsoever.

EMAAR

THE COVE

DUBAI CREEK HARBOUR

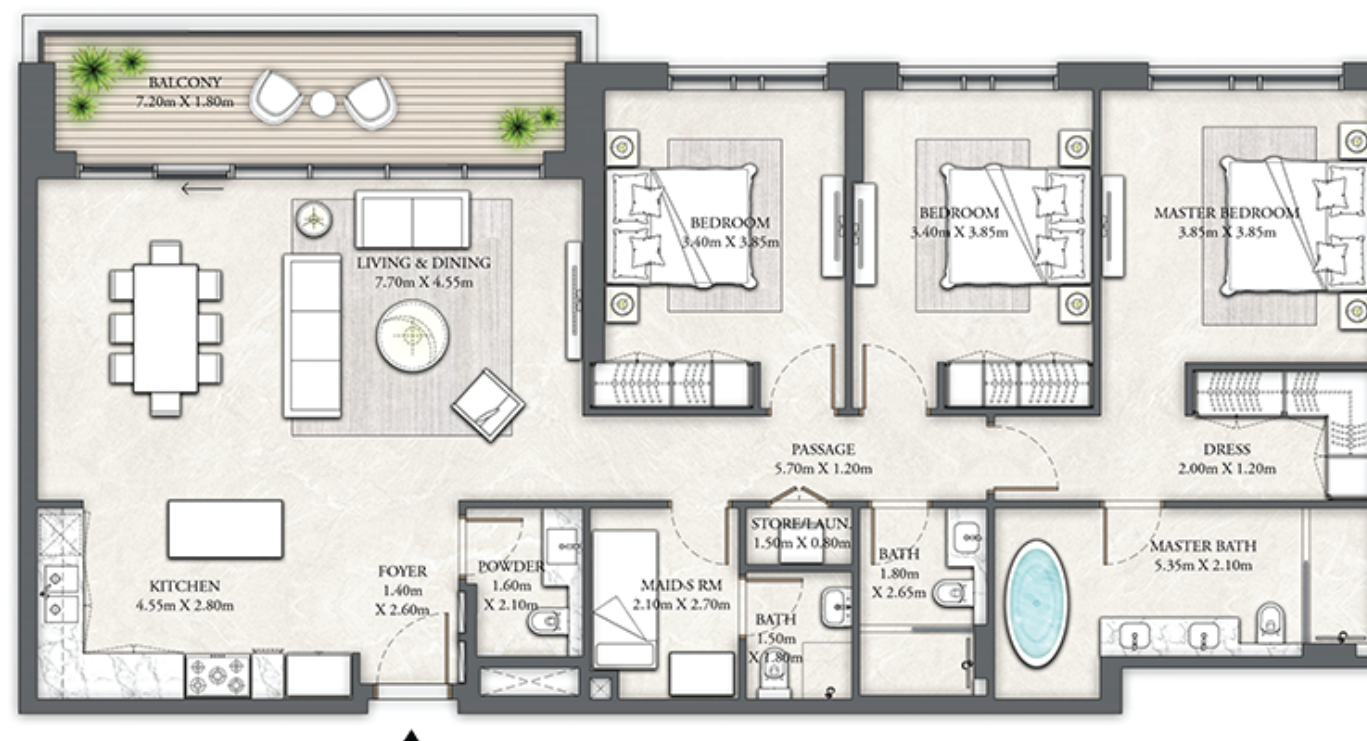
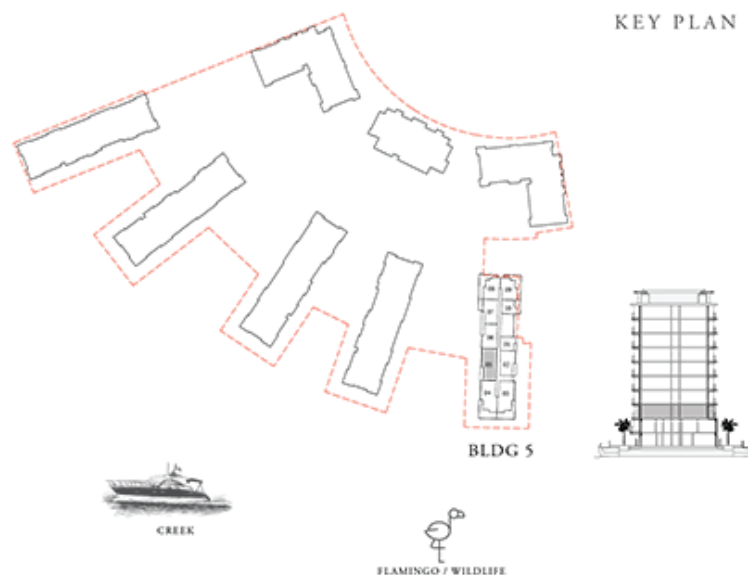
BUILDING 5 3 BEDROOM

LEVEL G

UNIT 05

| | | |
|--------------|----------------|--------------|
| SUITE AREA | 1666.36 SQ.FT. | 154.81 SQ.M. |
| BALCONY AREA | 161.35 SQ.FT. | 14.99 SQ.M. |
| TOTAL AREA | 1827.71 SQ.FT. | 169.80 SQ.M. |

KEY PLAN



FLOOR PLAN 1. All dimensions are in imperial and metric, and measured from finish to finish excluding construction tolerances. 2. All materials, dimensions, and drawings are approximate only. 3. Information is subject to change without notice, at developer's absolute discretion. 4. Actual area may vary from the stated area. 5. Drawings not to scale. 6. All images used are for illustrative purposes only and do not represent the actual size, features, specifications, fittings, and furnishings. 7. The developer reserves the right to make revisions / alterations, at it's absolute discretion, without any liability whatsoever.

EMAAR

THE COVE

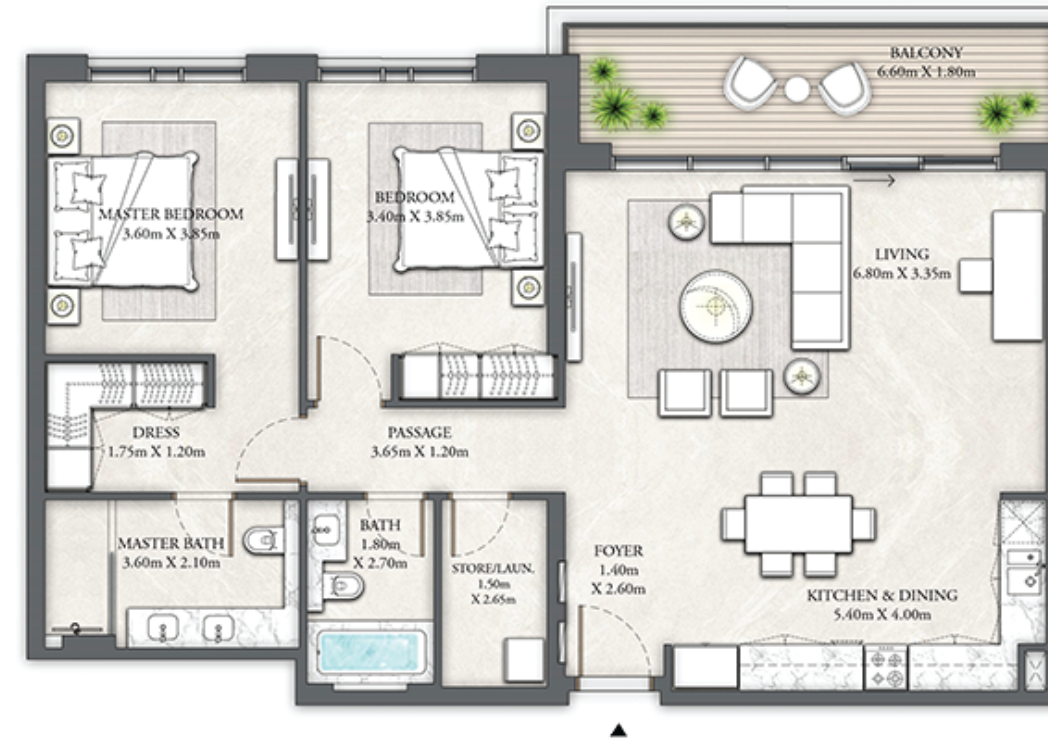
DUBAI CREEK HARBOUR

BUILDING 5 2 BEDROOM

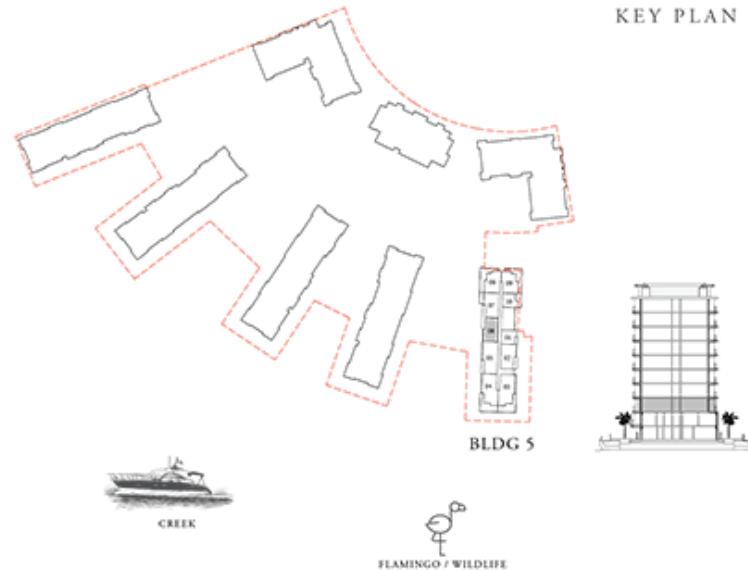
LEVEL G

UNIT 06

| | | |
|--------------|----------------|--------------|
| SUITE AREA | 1240.86 SQ.FT. | 115.28 SQ.M. |
| BALCONY AREA | 142.30 SQ.FT. | 13.22 SQ.M. |
| TOTAL AREA | 1383.16 SQ.FT. | 128.50 SQ.M. |



KEY PLAN



FLOOR PLAN 1. All dimensions are in imperial and metric, and measured from finish to finish excluding construction tolerances. 2. All materials, dimensions, and drawings are approximate only. 3. Information is subject to change without notice, at developer's absolute discretion. 4. Actual area may vary from the stated area. 5. Drawings not to scale. 6. All images used are for illustrative purposes only and do not represent the actual size, features, specifications, fittings, and furnishings. 7. The developer reserves the right to make revisions / alterations, at it's absolute discretion, without any liability whatsoever.

EMAAR

THE COVE

DUBAI CREEK HARBOUR

BUILDING 5 2 BEDROOM

LEVEL G

UNIT 07

| | | |
|--------------|----------------|--------------|
| SUITE AREA | 1238.28 SQ.FT. | 115.04 SQ.M. |
| BALCONY AREA | 334.22 SQ.FT. | 31.05 SQ.M. |
| TOTAL AREA | 1572.50 SQ.FT. | 146.09 SQ.M. |

KEY PLAN



FLOOR PLAN 1. All dimensions are in imperial and metric, and measured from finish to finish excluding construction tolerances. 2. All materials, dimensions, and drawings are approximate only. 3. Information is subject to change without notice, at developer's absolute discretion. 4. Actual area may vary from the stated area. 5. Drawings not to scale. 6. All images used are for illustrative purposes only and do not represent the actual size, features, specifications, fittings, and furnishings. 7. The developer reserves the right to make revisions / alterations, at it's absolute discretion, without any liability whatsoever.

EMAAR

THE COVE

DUBAI CREEK HARBOUR

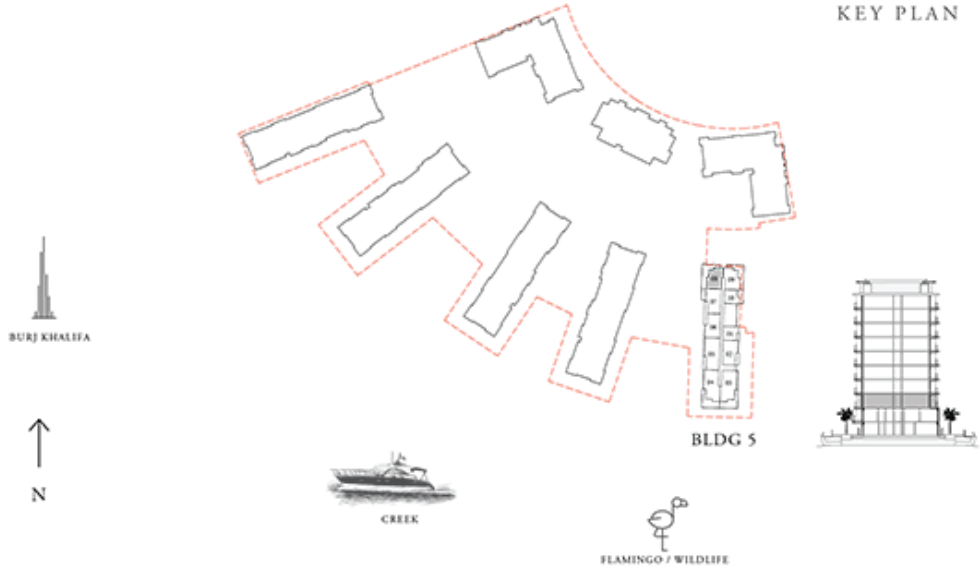
BUILDING 5 2 BEDROOM

LEVEL G UNIT 08

| | | |
|--------------|----------------|--------------|
| SUITE AREA | 1119.88 SQ.FT. | 104.04 SQ.M. |
| BALCONY AREA | 664.67 SQ.FT. | 61.75 SQ.M. |
| TOTAL AREA | 1784.55 SQ.FT. | 165.79 SQ.M. |



KEY PLAN



FLOOR PLAN 1. All dimensions are in imperial and metric, and measured from finish to finish excluding construction tolerances. 2. All materials, dimensions, and drawings are approximate only. 3. Information is subject to change without notice, at developer's absolute discretion. 4. Actual area may vary from the stated area. 5. Drawings not to scale. 6. All images used are for illustrative purposes only and do not represent the actual size, features, specifications, fittings, and furnishings. 7. The developer reserves the right to make revisions / alterations, at it's absolute discretion, without any liability whatsoever.

THE COVE

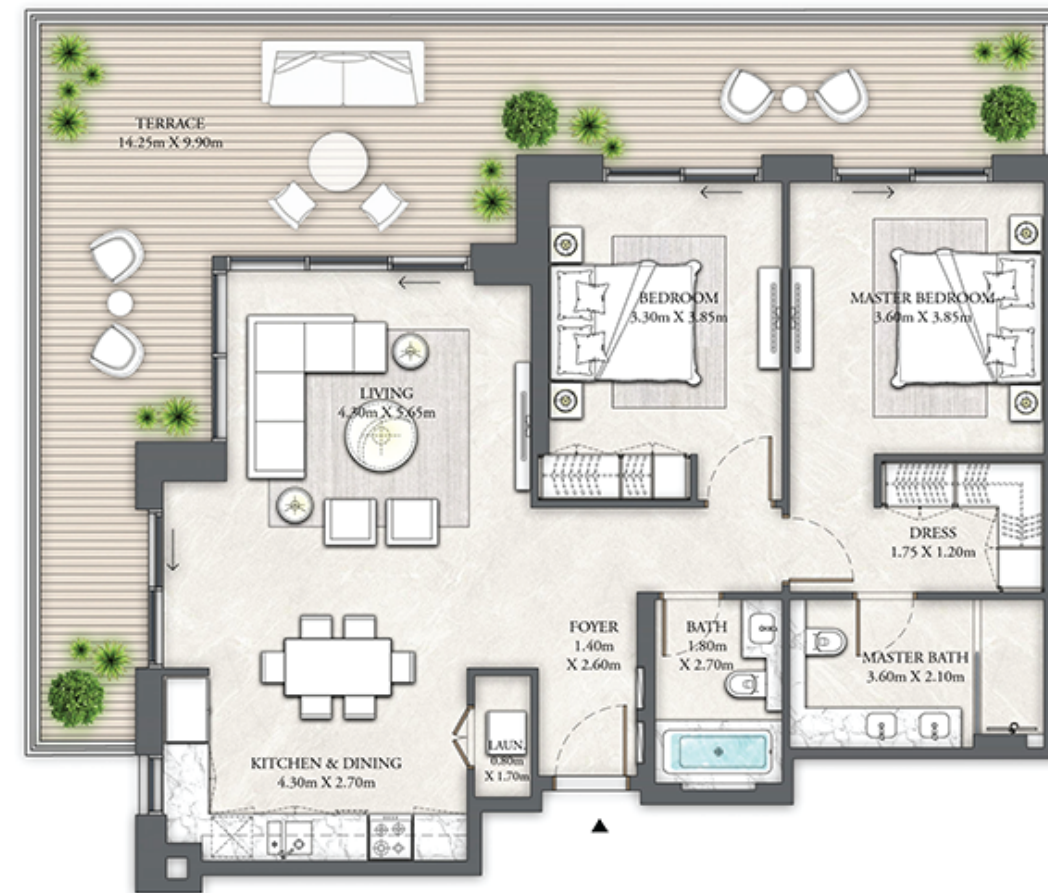
DUBAI CREEK HARBOUR

BUILDING 5 2 BEDROOM

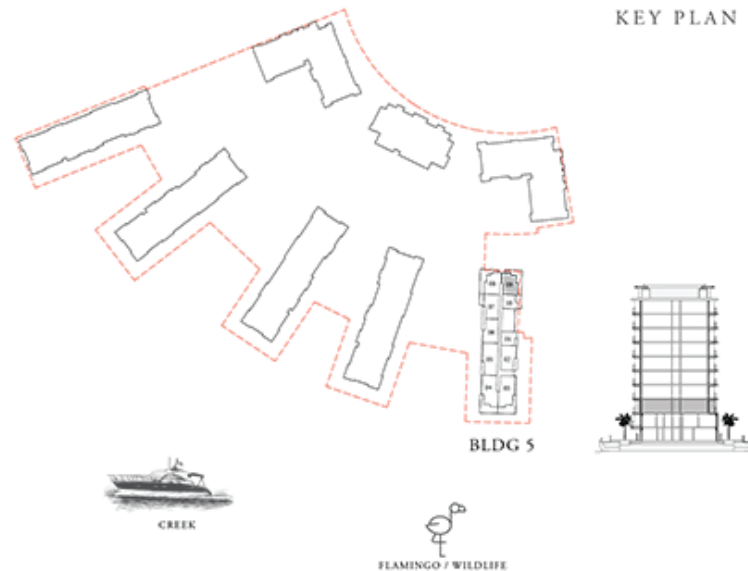
LEVEL G

UNIT 09

| | | |
|--------------|----------------|--------------|
| SUITE AREA | 1119.66 SQ.FT. | 104.02 SQ.M. |
| BALCONY AREA | 596.86 SQ.FT. | 55.45 SQ.M. |
| TOTAL AREA | 1716.52 SQ.FT. | 159.47 SQ.M. |



KEY PLAN



FLOOR PLAN 1. All dimensions are in imperial and metric, and measured from finish to finish excluding construction tolerances. 2. All materials, dimensions, and drawings are approximate only. 3. Information is subject to change without notice, at developer's absolute discretion. 4. Actual area may vary from the stated area. 5. Drawings not to scale. 6. All images used are for illustrative purposes only and do not represent the actual size, features, specifications, fittings, and furnishings. 7. The developer reserves the right to make revisions / alterations, at it's absolute discretion, without any liability whatsoever.

EMAAR

THE COVE

DUBAI CREEK HARBOUR

BUILDING 5 1 BEDROOM

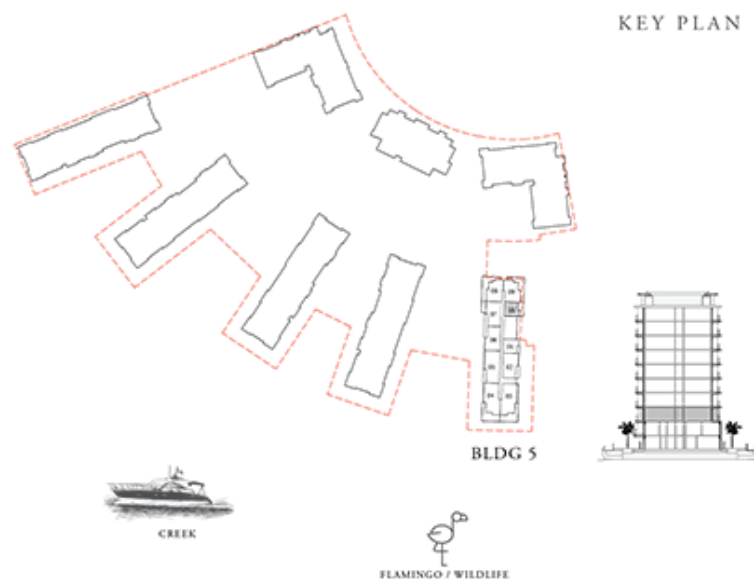
LEVEL G

UNIT 10

| | | |
|--------------|---------------|-------------|
| SUITE AREA | 691.26 SQ.FT. | 64.22 SQ.M. |
| BALCONY AREA | 256.29 SQ.FT. | 23.81 SQ.M. |
| TOTAL AREA | 947.55 SQ.FT. | 88.03 SQ.M. |



KEY PLAN



FLOOR PLAN 1. All dimensions are in imperial and metric, and measured from finish to finish excluding construction tolerances. 2. All materials, dimensions, and drawings are approximate only. 3. Information is subject to change without notice, at developer's absolute discretion. 4. Actual area may vary from the stated area. 5. Drawings not to scale. 6. All images used are for illustrative purposes only and do not represent the actual size, features, specifications, fittings, and furnishings. 7. The developer reserves the right to make revisions / alterations, at it's absolute discretion, without any liability whatsoever.

EMAAR

THE COVE

DUBAI CREEK HARBOUR

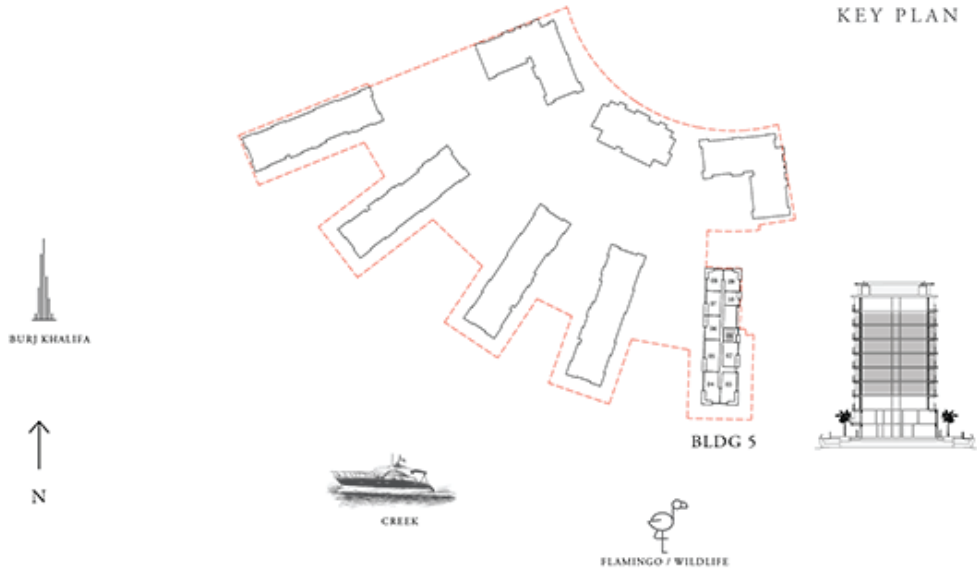
BUILDING 5 1 BEDROOM

LEVELS 01 - 06 UNIT 01

| | | |
|--------------|---------------|-------------|
| SUITE AREA | 695.89 SQ.FT. | 64.65 SQ.M. |
| BALCONY AREA | 91.60 SQ.FT. | 8.51 SQ.M. |
| TOTAL AREA | 787.49 SQ.FT. | 73.16 SQ.M. |



KEY PLAN



FLOOR PLAN 1. All dimensions are in imperial and metric, and measured from finish to finish excluding construction tolerances. 2. All materials, dimensions, and drawings are approximate only. 3. Information is subject to change without notice, at developer's absolute discretion. 4. Actual area may vary from the stated area. 5. Drawings not to scale. 6. All images used are for illustrative purposes only and do not represent the actual size, features, specifications, fittings, and furnishings. 7. The developer reserves the right to make revisions / alterations, at it's absolute discretion, without any liability whatsoever.

THE COVE

DUBAI CREEK HARBOUR

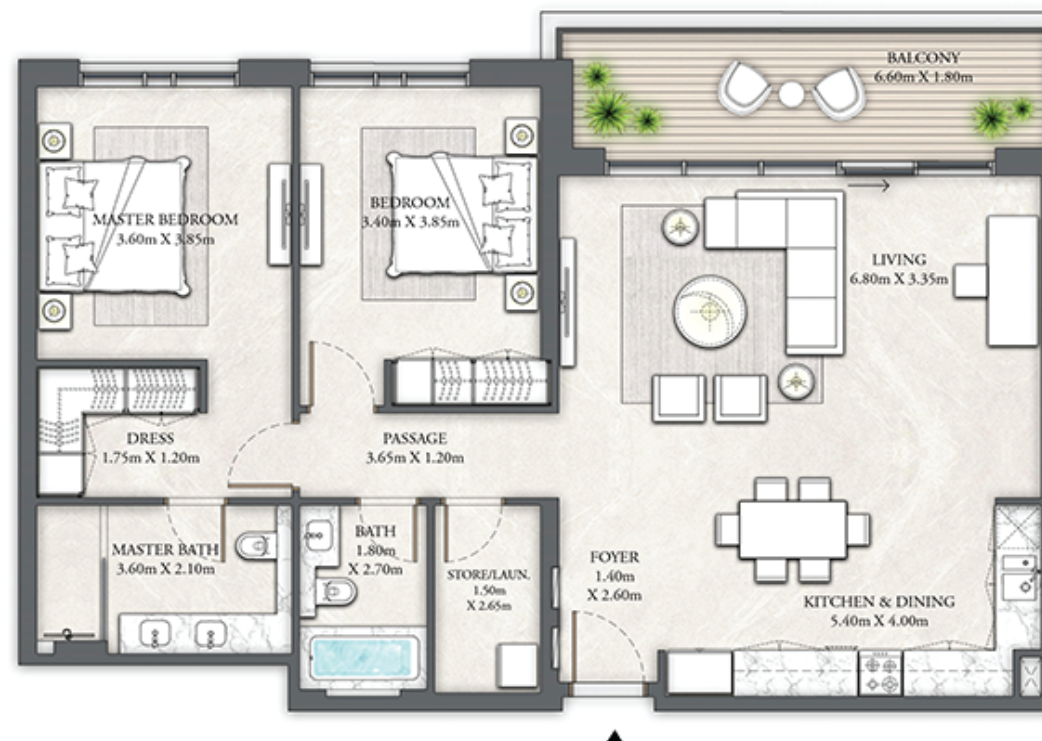
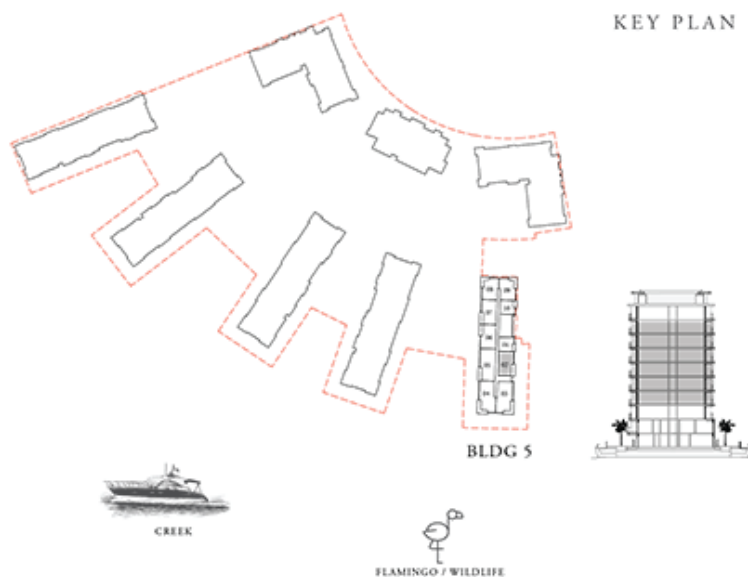
BUILDING 5 2 BEDROOM

LEVELS 01 - 06

UNIT 02

| | | |
|--------------|----------------|--------------|
| SUITE AREA | 1247.86 SQ.FT. | 115.93 SQ.M. |
| BALCONY AREA | 141.44 SQ.FT. | 13.14 SQ.M. |
| TOTAL AREA | 1389.30 SQ.FT. | 129.07 SQ.M. |

KEY PLAN



FLOOR PLAN 1. All dimensions are in imperial and metric, and measured from finish to finish excluding construction tolerances. 2. All materials, dimensions, and drawings are approximate only. 3. Information is subject to change without notice, at developer's absolute discretion. 4. Actual area may vary from the stated area. 5. Drawings not to scale. 6. All images used are for illustrative purposes only and do not represent the actual size, features, specifications, fittings, and furnishings. 7. The developer reserves the right to make revisions / alterations, at it's absolute discretion, without any liability whatsoever.

EMAAR

THE COVE

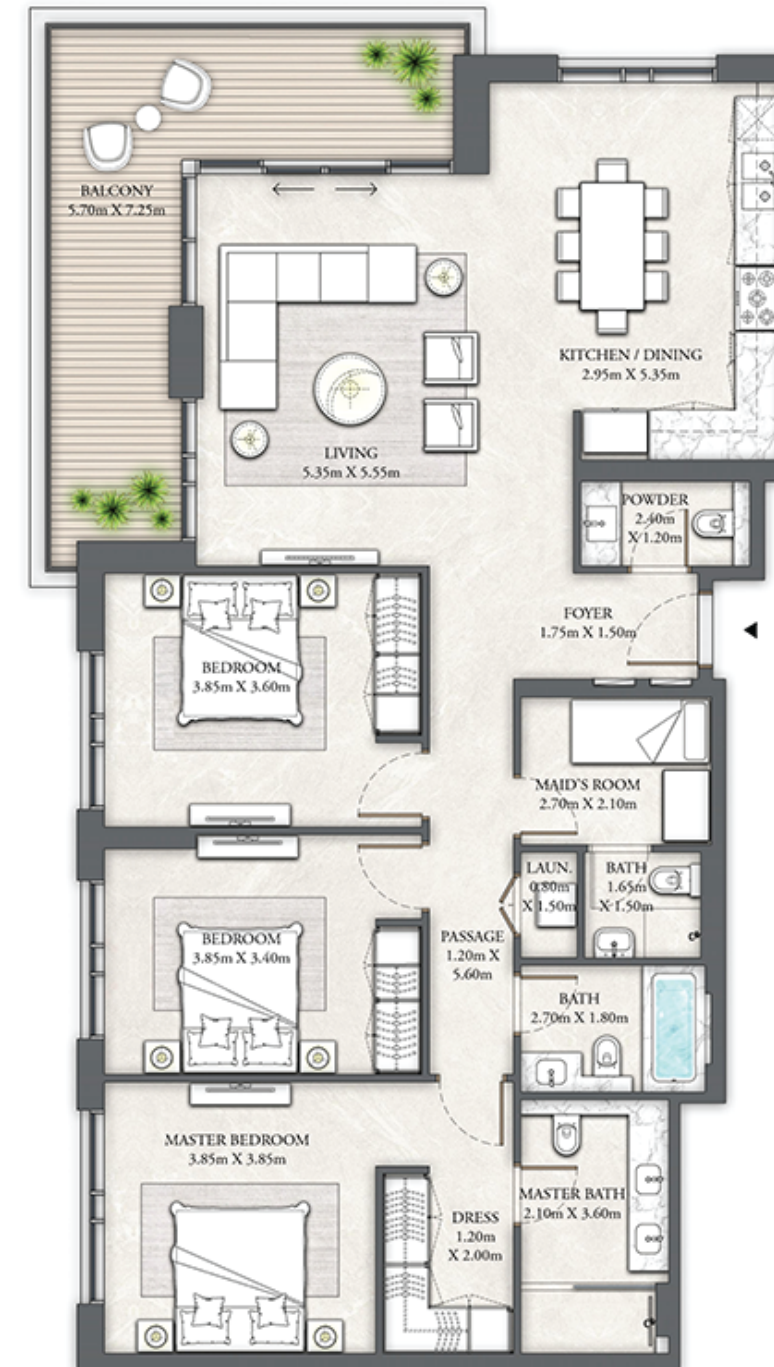
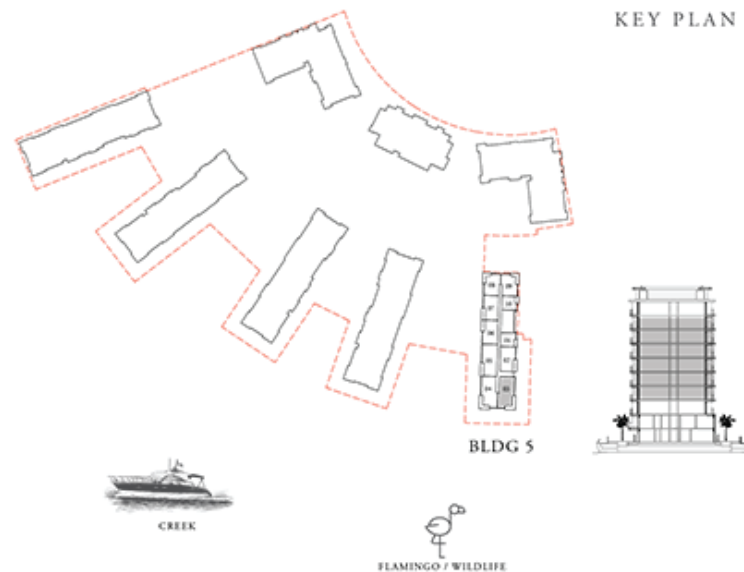
DUBAI CREEK HARBOUR

BUILDING 5 3 BEDROOM

LEVELS 01 - 06

UNIT 03

| | | |
|--------------|----------------|--------------|
| SUITE AREA | 1621.26 SQ.FT. | 150.62 SQ.M. |
| BALCONY AREA | 249.40 SQ.FT. | 23.17 SQ.M. |
| TOTAL AREA | 1870.66 SQ.FT. | 173.79 SQ.M. |



FLOOR PLAN 1. All dimensions are in imperial and metric, and measured from finish to finish excluding construction tolerances. 2. All materials, dimensions, and drawings are approximate only. 3. Information is subject to change without notice, at developer's absolute discretion. 4. Actual area may vary from the stated area. 5. Drawings not to scale. 6. All images used are for illustrative purposes only and do not represent the actual size, features, specifications, fittings, and furnishings. 7. The developer reserves the right to make revisions / alterations, at it's absolute discretion, without any liability whatsoever.

EMAAR

THE COVE

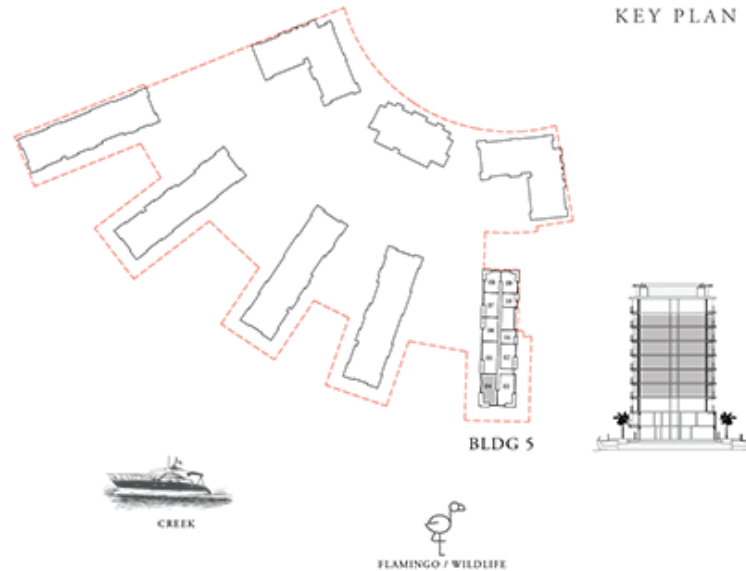
DUBAI CREEK HARBOUR

BUILDING 5 3 BEDROOM

LEVELS 01 - 06

UNIT 04

| | | |
|--------------|----------------|--------------|
| SUITE AREA | 1618.35 SQ.FT. | 150.35 SQ.M. |
| BALCONY AREA | 249.40 SQ.FT. | 23.17 SQ.M. |
| TOTAL AREA | 1867.75 SQ.FT. | 173.52 SQ.M. |



FLOOR PLAN 1. All dimensions are in imperial and metric, and measured from finish to finish excluding construction tolerances. 2. All materials, dimensions, and drawings are approximate only. 3. Information is subject to change without notice, at developer's absolute discretion. 4. Actual area may vary from the stated area. 5. Drawings not to scale. 6. All images used are for illustrative purposes only and do not represent the actual size, features, specifications, fittings, and furnishings. 7. The developer reserves the right to make revisions / alterations, at it's absolute discretion, without any liability whatsoever.

EMAAR

THE COVE

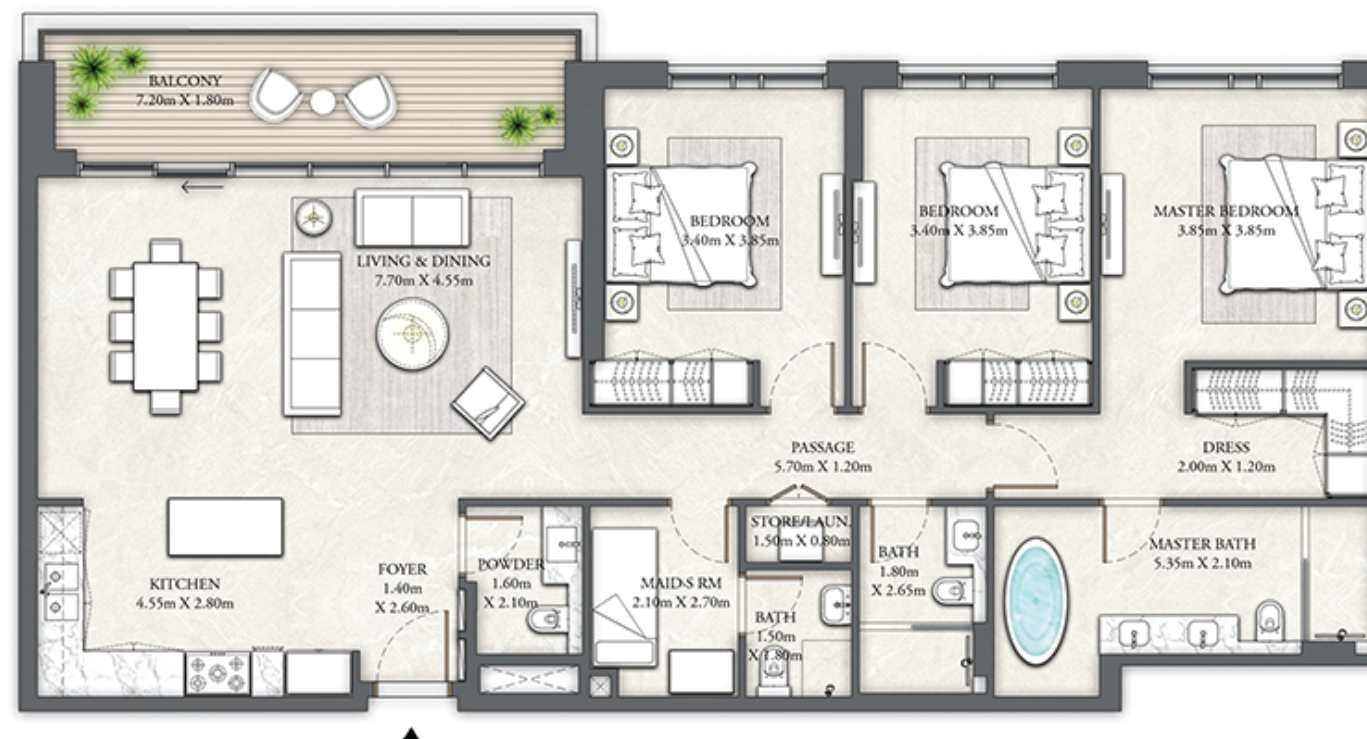
DUBAI CREEK HARBOUR

BUILDING 5 3 BEDROOM

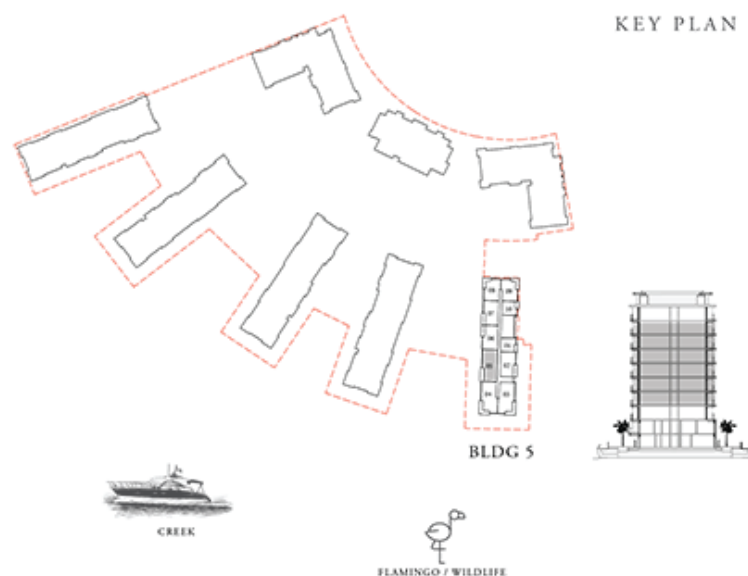
LEVELS 01 - 06

UNIT 05

| | | |
|--------------|----------------|--------------|
| SUITE AREA | 1666.36 SQ.FT. | 154.81 SQ.M. |
| BALCONY AREA | 161.35 SQ.FT. | 14.99 SQ.M. |
| TOTAL AREA | 1827.71 SQ.FT. | 169.80 SQ.M. |



KEY PLAN



FLOOR PLAN 1. All dimensions are in imperial and metric, and measured from finish to finish excluding construction tolerances. 2. All materials, dimensions, and drawings are approximate only. 3. Information is subject to change without notice, at developer's absolute discretion. 4. Actual area may vary from the stated area. 5. Drawings not to scale. 6. All images used are for illustrative purposes only and do not represent the actual size, features, specifications, fittings, and furnishings. 7. The developer reserves the right to make revisions / alterations, at it's absolute discretion, without any liability whatsoever.

EMAAR

THE COVE

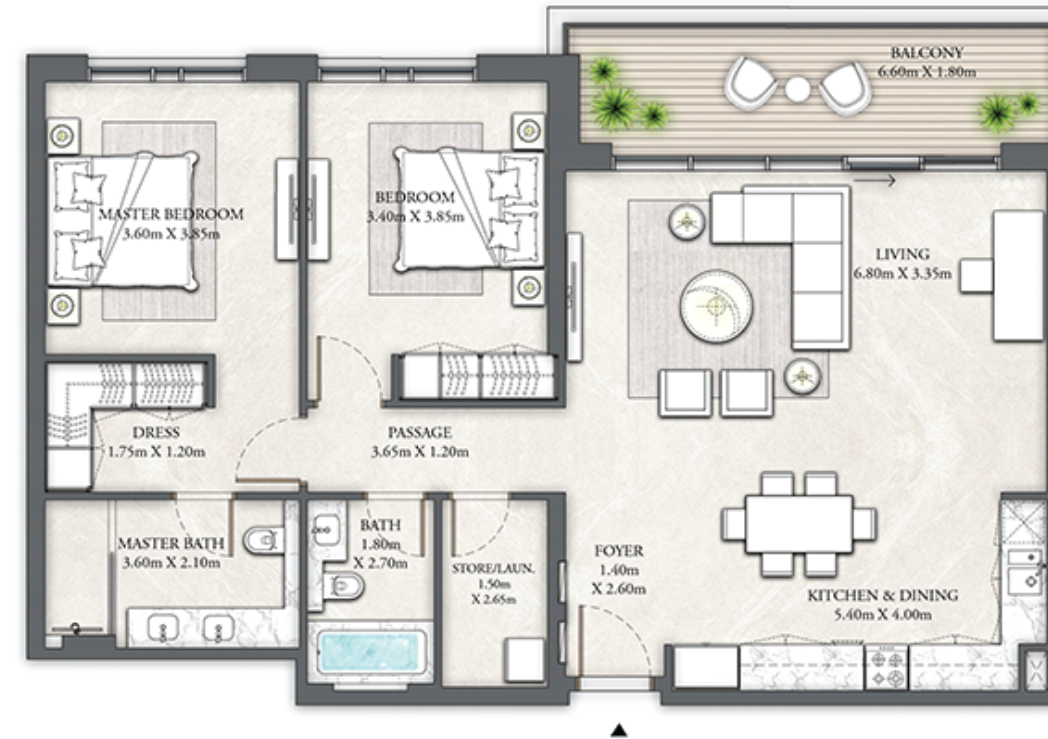
DUBAI CREEK HARBOUR

BUILDING 5 2 BEDROOM

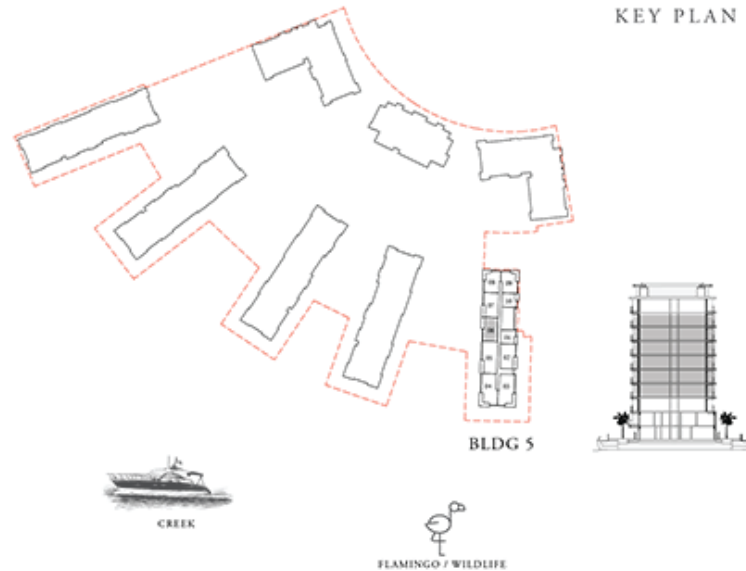
LEVELS 01 - 06

UNIT 06

| | | |
|--------------|----------------|--------------|
| SUITE AREA | 1240.86 SQ.FT. | 115.28 SQ.M. |
| BALCONY AREA | 144.88 SQ.FT. | 13.46 SQ.M. |
| TOTAL AREA | 1385.74 SQ.FT. | 128.74 SQ.M. |



KEY PLAN



FLOOR PLAN 1. All dimensions are in imperial and metric, and measured from finish to finish excluding construction tolerances. 2. All materials, dimensions, and drawings are approximate only. 3. Information is subject to change without notice, at developer's absolute discretion. 4. Actual area may vary from the stated area. 5. Drawings not to scale. 6. All images used are for illustrative purposes only and do not represent the actual size, features, specifications, fittings, and furnishings. 7. The developer reserves the right to make revisions / alterations, at it's absolute discretion, without any liability whatsoever.

EMAAR

THE COVE

DUBAI CREEK HARBOUR

BUILDING 5 2 BEDROOM

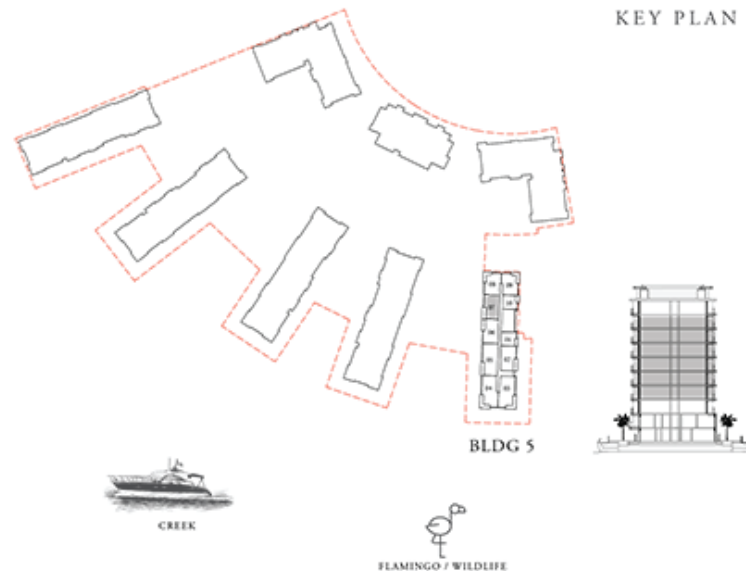
LEVELS 01 - 06

UNIT 07

| | | |
|--------------|----------------|--------------|
| SUITE AREA | 1240.97 SQ.FT. | 115.29 SQ.M. |
| BALCONY AREA | 144.88 SQ.FT. | 13.46 SQ.M. |
| TOTAL AREA | 1385.85 SQ.FT. | 128.75 SQ.M. |



KEY PLAN



FLOOR PLAN 1. All dimensions are in imperial and metric, and measured from finish to finish excluding construction tolerances. 2. All materials, dimensions, and drawings are approximate only. 3. Information is subject to change without notice, at developer's absolute discretion. 4. Actual area may vary from the stated area. 5. Drawings not to scale. 6. All images used are for illustrative purposes only and do not represent the actual size, features, specifications, fittings, and furnishings. 7. The developer reserves the right to make revisions / alterations, at it's absolute discretion, without any liability whatsoever.

EMAAR

THE COVE

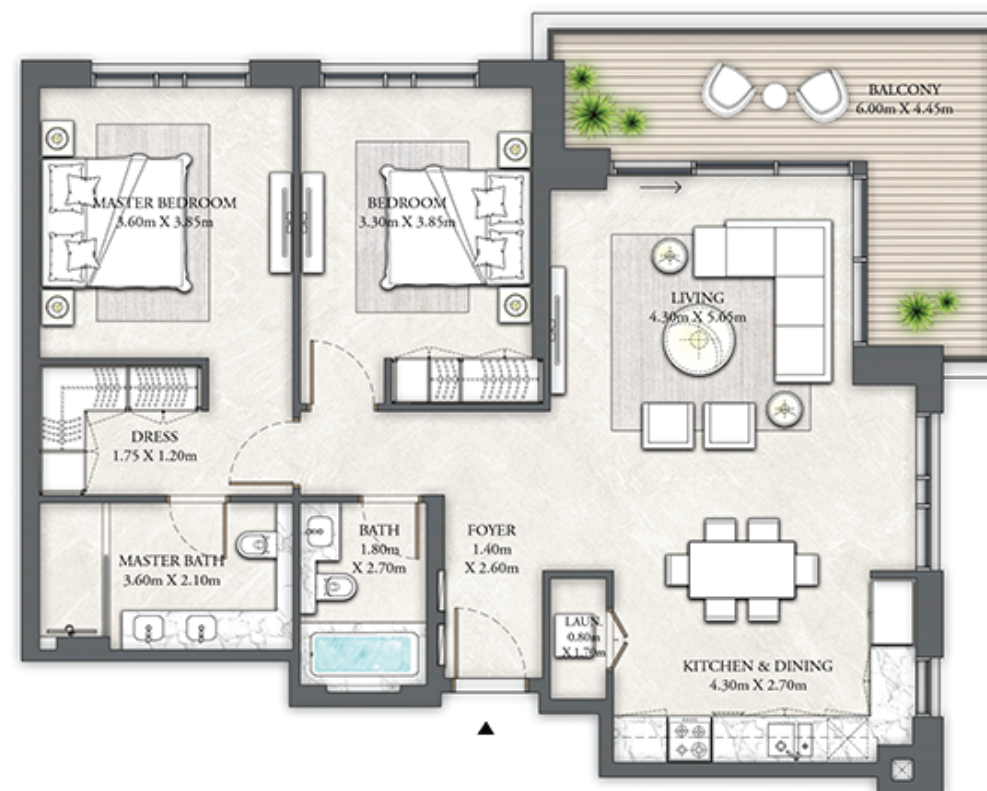
DUBAI CREEK HARBOUR

BUILDING 5 2 BEDROOM

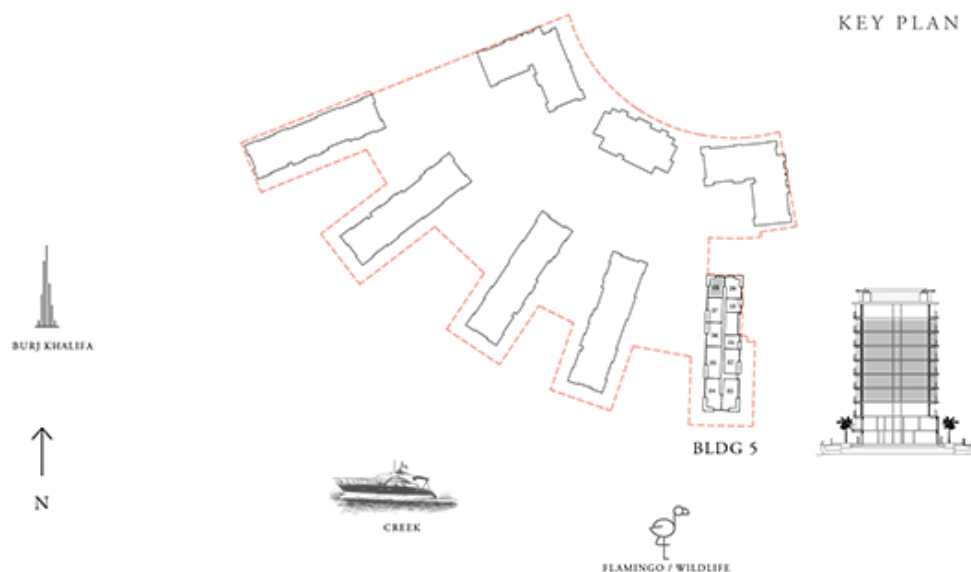
LEVELS 01 - 06

UNIT 08

| | | |
|--------------|----------------|--------------|
| SUITE AREA | 1123.86 SQ.FT. | 104.41 SQ.M. |
| BALCONY AREA | 188.48 SQ.FT. | 17.51 SQ.M. |
| TOTAL AREA | 1312.34 SQ.FT. | 121.92 SQ.M. |



KEY PLAN



FLOOR PLAN 1. All dimensions are in imperial and metric, and measured from finish to finish excluding construction tolerances. 2. All materials, dimensions, and drawings are approximate only. 3. Information is subject to change without notice, at developer's absolute discretion. 4. Actual area may vary from the stated area. 5. Drawings not to scale. 6. All images used are for illustrative purposes only and do not represent the actual size, features, specifications, fittings, and furnishings. 7. The developer reserves the right to make revisions / alterations, at it's absolute discretion, without any liability whatsoever.

EMAAR

THE COVE

DUBAI CREEK HARBOUR

BUILDING 5 2 BEDROOM

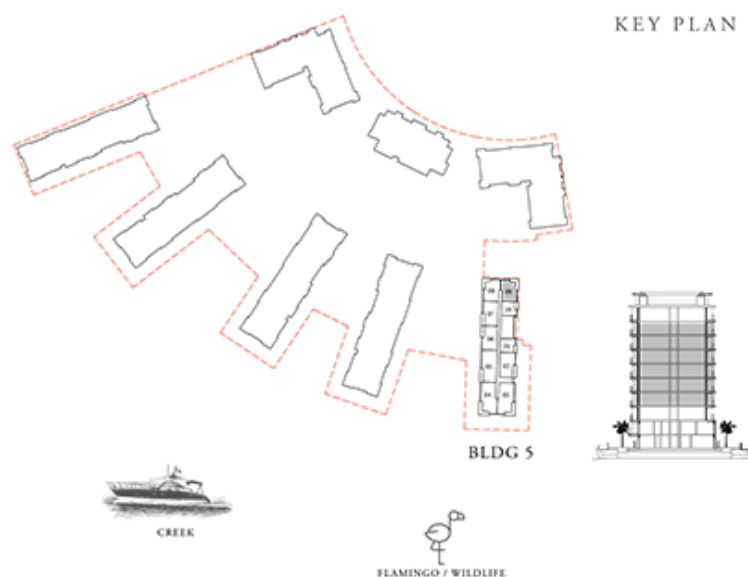
LEVELS 01 - 06

UNIT 09

| | | |
|--------------|----------------|--------------|
| SUITE AREA | 1123.64 SQ.FT. | 104.39 SQ.M. |
| BALCONY AREA | 188.37 SQ.FT. | 17.50 SQ.M. |
| TOTAL AREA | 1312.01 SQ.FT. | 121.89 SQ.M. |



KEY PLAN



FLOOR PLAN 1. All dimensions are in imperial and metric, and measured from finish to finish excluding construction tolerances. 2. All materials, dimensions, and drawings are approximate only. 3. Information is subject to change without notice, at developer's absolute discretion. 4. Actual area may vary from the stated area. 5. Drawings not to scale. 6. All images used are for illustrative purposes only and do not represent the actual size, features, specifications, fittings, and furnishings. 7. The developer reserves the right to make revisions / alterations, at it's absolute discretion, without any liability whatsoever.

EMAAR

THE COVE

DUBAI CREEK HARBOUR

BUILDING 5 1 BEDROOM

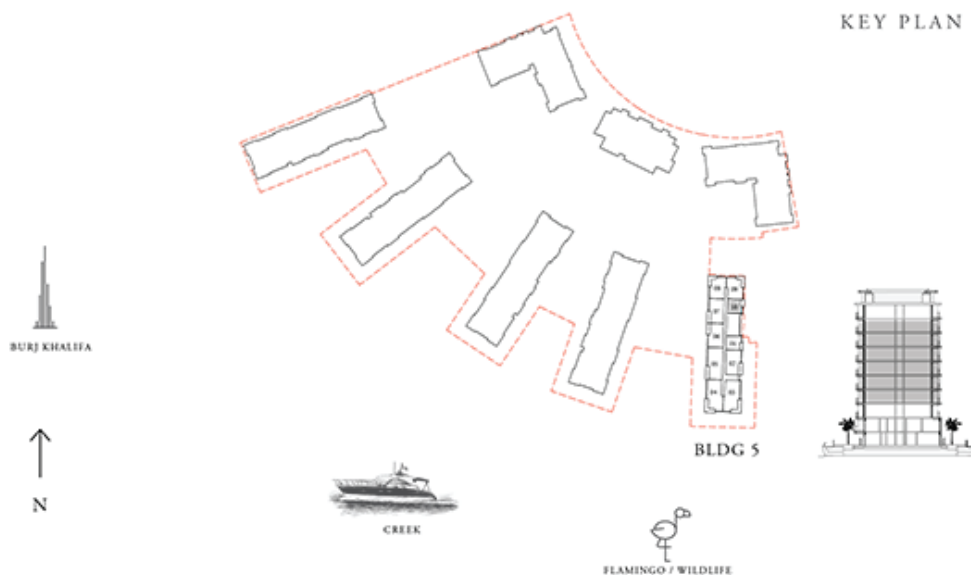
LEVELS 01 - 06

UNIT 10

| | | |
|--------------|---------------|-------------|
| SUITE AREA | 692.55 SQ.FT. | 64.34 SQ.M. |
| BALCONY AREA | 92.14 SQ.FT. | 8.56 SQ.M. |
| TOTAL AREA | 784.69 SQ.FT. | 72.90 SQ.M. |



KEY PLAN



FLOOR PLAN 1. All dimensions are in imperial and metric, and measured from finish to finish excluding construction tolerances. 2. All materials, dimensions, and drawings are approximate only. 3. Information is subject to change without notice, at developer's absolute discretion. 4. Actual area may vary from the stated area. 5. Drawings not to scale. 6. All images used are for illustrative purposes only and do not represent the actual size, features, specifications, fittings, and furnishings. 7. The developer reserves the right to make revisions / alterations, at it's absolute discretion, without any liability whatsoever.

EMAAR

THE COVE

DUBAI CREEK HARBOUR

BUILDING 5 4 BEDROOM PENTHOUSE

LEVEL 07

UNIT 01

| | | |
|--------------|----------------|--------------|
| SUITE AREA | 3439.82 SQ.FT. | 319.57 SQ.M. |
| BALCONY AREA | 1510.82 SQ.FT. | 140.36 SQ.M. |
| TOTAL AREA | 4950.64 SQ.FT. | 459.93 SQ.M. |

KEY PLAN



FLOOR PLAN 1. All dimensions are in imperial and metric, and measured from finish to finish excluding construction tolerances. 2. All materials, dimensions, and drawings are approximate only. 3. Information is subject to change without notice, at developer's absolute discretion. 4. Actual area may vary from the stated area. 5. Drawings not to scale. 6. All images used are for illustrative purposes only and do not represent the actual size, features, specifications, fittings, and furnishings. 7. The developer reserves the right to make revisions / alterations, at it's absolute discretion, without any liability whatsoever.

EMAAR

THE COVE

DUBAI CREEK HARBOUR

BUILDING 5 4 BEDROOM PENTHOUSE

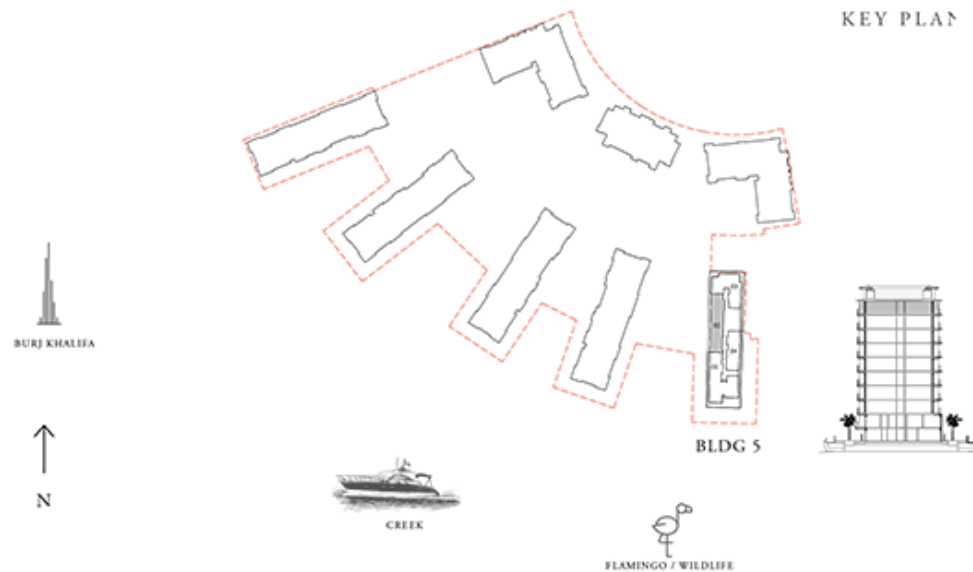
LEVEL 07

UNIT 02

| | | |
|--------------|----------------|--------------|
| SUITE AREA | 2647.28 SQ.FT. | 245.94 SQ.M. |
| BALCONY AREA | 377.17 SQ.FT. | 35.04 SQ.M. |
| TOTAL AREA | 3024.45 SQ.FT. | 280.98 SQ.M. |



KEY PLAN



FLOOR PLAN 1. All dimensions are in imperial and metric, and measured from finish to finish excluding construction tolerances. 2. All materials, dimensions, and drawings are approximate only. 3. Information is subject to change without notice, at developer's absolute discretion. 4. Actual area may vary from the stated area. 5. Drawings not to scale. 6. All images used are for illustrative purposes only and do not represent the actual size, features, specifications, fittings, and furnishings. 7. The developer reserves the right to make revisions / alterations, at it's absolute discretion, without any liability whatsoever.

EMAAR

THE COVE

DUBAI CREEK HARBOUR

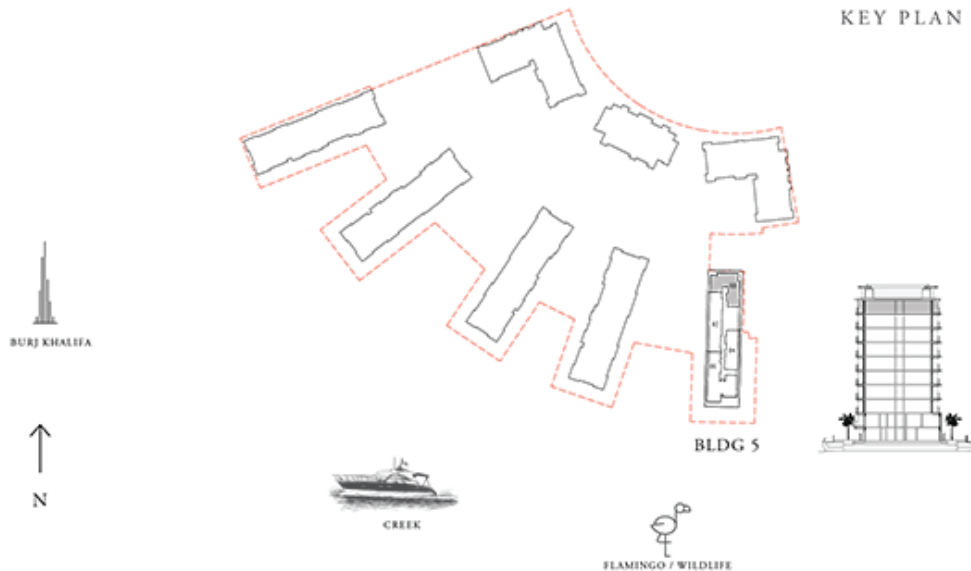
BUILDING 5 3 BEDROOM PENTHOUSE

LEVEL 07

UNIT 03

| | | |
|--------------|----------------|--------------|
| SUITE AREA | 2448.90 SQ.FT. | 227.51 SQ.M. |
| BALCONY AREA | 872.09 SQ.FT. | 81.02 SQ.M. |
| TOTAL AREA | 3320.99 SQ.FT. | 308.53 SQ.M. |

KEY PLAN



FLOOR PLAN 1. All dimensions are in imperial and metric, and measured from finish to finish excluding construction tolerances. 2. All materials, dimensions, and drawings are approximate only. 3. Information is subject to change without notice, at developer's absolute discretion. 4. Actual area may vary from the stated area. 5. Drawings not to scale. 6. All images used are for illustrative purposes only and do not represent the actual size, features, specifications, fittings, and furnishings. 7. The developer reserves the right to make revisions / alterations, at it's absolute discretion, without any liability whatsoever.

EMAAR

THE COVE

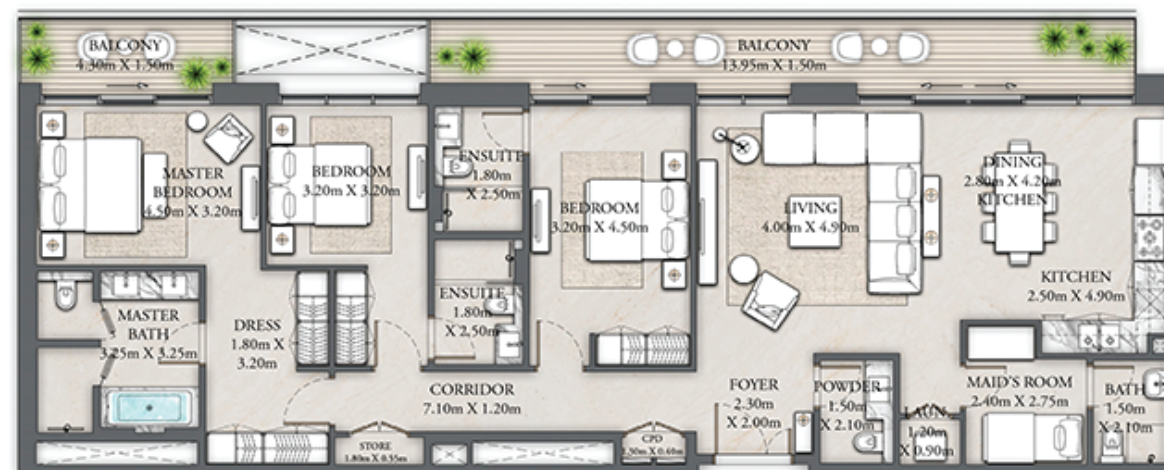
DUBAI CREEK HARBOUR

BUILDING 5 3 BEDROOM PENTHOUSE

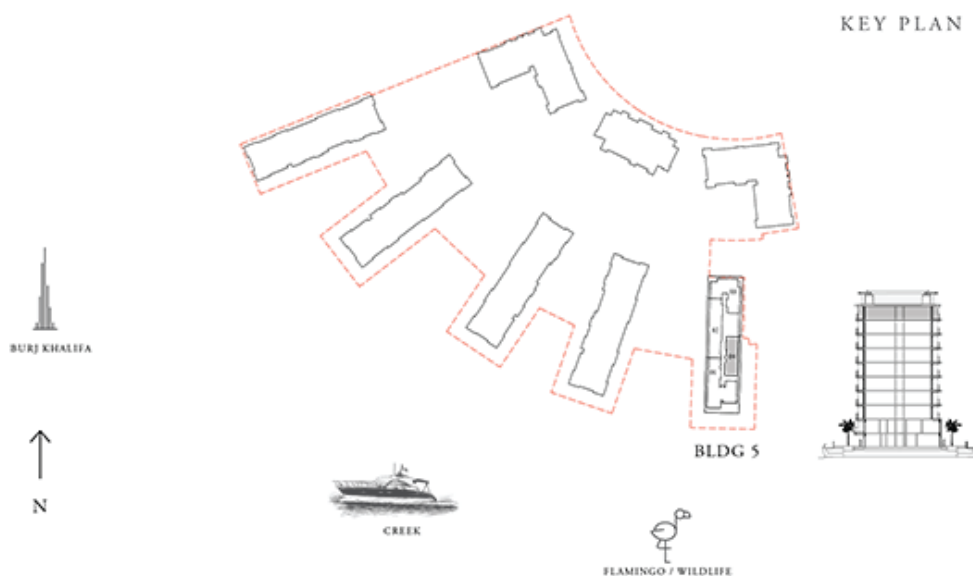
LEVEL 07

UNIT 04

| | | |
|--------------|----------------|--------------|
| SUITE AREA | 1738.80 SQ.FT. | 161.54 SQ.M. |
| BALCONY AREA | 312.05 SQ.FT. | 28.99 SQ.M. |
| TOTAL AREA | 2050.85 SQ.FT. | 190.53 SQ.M. |



KEY PLAN



FLOOR PLAN 1. All dimensions are in imperial and metric, and measured from finish to finish excluding construction tolerances. 2. All materials, dimensions, and drawings are approximate only. 3. Information is subject to change without notice, at developer's absolute discretion. 4. Actual area may vary from the stated area. 5. Drawings not to scale. 6. All images used are for illustrative purposes only and do not represent the actual size, features, specifications, fittings, and furnishings. 7. The developer reserves the right to make revisions / alterations, at it's absolute discretion, without any liability whatsoever.

EMAAR

THE COVE

DUBAI CREEK HARBOUR

FOR MORE INFORMATION PLEASE CONTACT



REAL ESTATE

STAY AHEAD, INVEST SMART

 +971 55 476 7630
 +971 4 368 7878
 info@afsrealestate.com
 www.afsrealestate.com



DUBRICKS

POSSIBILITIES ARE LIMITLESS

 +971 50 674 2020
 +971 4 368 7878
 info@dubricks.com
 www.dubricks.com

EMAAR